

SEMA3C Rabbit pAb

货号: **AYP13885**

产品信息

反应	Human,Mouse
宿主	Rabbit
克隆性	Polyclonal
预测反应	WB: Rattus norvegicus
应用	WB IF/ICC
推荐浓度	WB: 1:500 - 1:1000 IF/ICC: 1:50 - 1:200
理论分子量	26kDa/85kDa
实测分子量	85KDa
形式	Liquid
保存条件	Store at -20°C. Avoid freeze / thaw cycles. Buffer: PBS with 0.01% thiomersal,50% glycerol,pH7.3.
偶联物	Unconjugated
阳性对照	Human serum
细胞定位	Secreted
纯化	Affinity purification

抗原信息

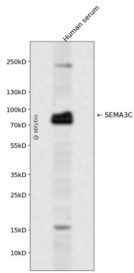
抗原信息	Recombinant fusion protein containing a sequence corresponding to amino acids 21-330 of human SEMA 3C (NP_006370.1).
序列	GSSQPQARVYLTFFDELRETKTSEYFSLSHHPLDYRILLMDEDQDRIYVGSKDHILSLNINNISQEALSVFWPASTIKVEECKM AGKDPTHGCGNFVRVIQTFNRTHLYVCGSGAFSPVCTYLNRRRSEDQVFMIDSKCESGKGRCSFNPNVNTVSMINEEL FSGMYIDFMGTDAAFRSLTKRNAVRTDQHNSKWLSEPMFVDAHVIPDGTDPNDKAVYFFFKEKLTDDNNRSTKQIHSMIA RICPNDTGGLRSLVKNKWTFFLKARLVCSVTDEDGPETHFDELEDVFLLETDPNRTTLVYGIFTTSSS

靶点信息

研究背景	Binds to plexin family members and plays an important role in the regulation of developmental processes. Required for normal cardiovascular development during embryogenesis. Functions as attractant for growing axons, and thereby plays an important role in axon growth and axon guidance (By similarity).
------	--

基因ID	10512
基因名	SEMA3C
Swiss	Q99985
别名	SEMA3C;SEMAE;SemE

产品验证



Western blot analysis of SEMA3C expressed in Human serum using SEMA3C Rabbit pAb at 1:1000. Secondary antibody: HRP Goat Anti-Rabbit IgG (H+L) at 1:5000. Lysates/proteins: 30ug per lane. Blocking buffer: 5% non-fat dry milk in TBST. Detection: ECL Enhanced Kit. Exposure time: 120s.

实验步骤

访问官网浏览详情: www.ablybio.cn