

RBM25 Rabbit pAb

货号: **AYP13882**

产品信息

反应	Human,Mouse
宿主	Rabbit
克隆性	Polyclonal
预测反应	WB: Homo sapiens
应用	WB IF/ICC
推荐浓度	WB: 1:200 - 1:2000 IF/ICC: 1:50 - 1:200
理论分子量	17kDa/32kDa/33kDa/100kDa
实测分子量	120kDa
形式	Liquid
保存条件	Store at -20°C. Avoid freeze / thaw cycles. Buffer: PBS with 0.01% thiomersal,50% glycerol,pH7.3.
偶联物	Unconjugated
阳性对照	DU145,OVCAR3,HepG2,Jurkat,NIH/3T3,mouse brain,mouse liver
细胞定位	Cytoplasm,Nucleus speckle
纯化	Affinity purification

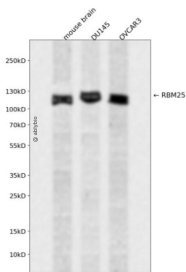
抗原信息

抗原信息	Recombinant fusion protein containing a sequence corresponding to amino acids 614-843 of human RBM 25 (NP_067062.1).
序列	KPTLRPISSAPSVSSASGNATPNTPGDESPCGIIIPHENSPDQQQPEEHRPKIGLSLKLKLGASNSPGQPNSVKRKKLPVDSVF NKFEDESDDDVPRKRKLVPLDYGEDDKNATKGTVNTEEKRKHKSLIEKIPTAKPELFAYPLDWSIVDSILMERRIRPWINKKI IEYIGEEEATLVDFVCSKVMMAHSSPQSILDDVAMVLDEEAEVFIVKMWRLLIYETEAKKIGLVK

靶点信息

研究背景	RNA-binding protein that acts as a regulator of alternative pre-mRNA splicing. Involved in apoptotic cell death through the regulation of the apoptotic factor BCL2L1 isoform expression. Modulates the ratio of proapoptotic BCL2L1 isoform S to antiapoptotic BCL2L1 isoform L mRNA expression. When overexpressed, stimulates proapoptotic BCL2L1 isoform S 5'-splice site (5'-ss) selection, whereas its depletion caused the accumulation of antiapoptotic BCL2L1 isoform L. Promotes BCL2L1 isoform S 5'-ss usage through the 5'-CGGGCA-3' RNA sequence. Its association with LUC7L3 promotes U1 snRNP binding to a weak 5' ss in a 5'-CGGGCA-3'-dependent manner. Binds to the exonic splicing enhancer 5'-CGGGCA-3' RNA sequence located within exon 2 of the BCL2L1 pre-mRNA. Also involved in the generation of an abnormal and truncated splice form of SCN5A in heart failure.
基因ID	58517
基因名	RBM25
Swiss	P49756
别名	RBM25;NET52;RED120;RNPC7;S164;Snu71;fSAP94

产品验证



Western blot analysis of RBM25 expressed in mouse brain,DU145,OVCAR3 using RBM25 Rabbit pAb at 1:1000. Secondary antibody: HRP Goat Anti-Rabbit IgG (H+L) at 1:5000. Lysates/proteins: 30ug per lane. Blocking buffer: 5% non-fat dry milk in TBST. Detection: ECL Enhanced Kit. Exposure time: 120s.

实验步骤

访问官网浏览详情: www.ablybio.cn