

IPO4 Rabbit pAb

货号: **AYP13877**

产品信息

反应	Human,Mouse,Rat
宿主	Rabbit
克隆性	Polyclonal
预测反应	IF: Homo sapiens
应用	WB IF/ICC
推荐浓度	WB: 1:500 - 1:2000 IF/ICC: 1:50 - 1:200
理论分子量	119kDa
实测分子量	119kDa
形式	Liquid
保存条件	Store at -20°C. Avoid freeze / thaw cycles. Buffer: PBS with 0.01% thiomersal,50% glycerol,pH7.3.
偶联物	Unconjugated
阳性对照	HeLa,SH-SY5Y,A-549,HepG2,Mouse brain,Mouse lung,Rat brain
细胞定位	Cytoplasm,Nucleus
纯化	Affinity purification

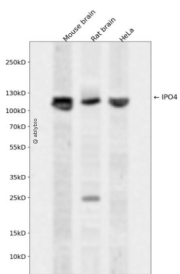
抗原信息

抗原信息	Recombinant fusion protein containing a sequence corresponding to amino acids 728-1081 of human IPO 4 (NP_078934.3).
序列	LHKACQSCPSEPNTAALQAALARVPSYMQAVNRERERQVVMVLEALTGVLRSGLTLTKPPGRLAELCGVLKAVLQRKT ACQDTDEEEEEEDDDQAEYDAMLLEHAGEAIPALAAAAGGDSFAPFFAGFLPLLVCCKTKQGCTVAEKSFAVGTLAETIQGL GAASAQFVSRLLPVLLSTAQEADPEVRSNAIFGMGVLAEHGGHPAQEHFPKLLGLLFPLLARERHDRVDRNICGALARLLM ASPTRKPEPQVLAALLHALPLKEDLEEWWVTIGRLFSFLYQSSPDQVIDVAPELLRICSLILADNKIPPDTKAALLLLTFLAKQH TDSFQAALGSLPVDKAQELQAVLGLS

靶点信息

研究背景	Functions in nuclear protein import as nuclear transport receptor. Serves as receptor for nuclear localization signals (NLS in cargo substrates). Is thought to mediate docking of the importin/substrate complex to the nuclear pore complex (NPC through binding to nucleoporin and the complex is subsequently translocated through the pore by an energy requiring, Ran-dependent mechanism. At the nucleoplasmic side of the NPC, Ran binds to the importin, the importin/substrate complex dissociates and importin is re-exported from the nucleus to the cytoplasm where GTP hydrolysis releases Ran. The directionality of nuclear import is thought to be conferred by an asymmetric distribution of the GTP- and GDP-bound forms of Ran between the cytoplasm and nucleus (By similarity). Mediates the nuclear import of RPS3A. In vitro, mediates the nuclear import of human cytomegalovirus UL84 by recognizing a non-classical NLS.
基因ID	79711
基因名	IPO4
Swiss	Q8TEX9
别名	IPO4;Imp4

产品验证



Western blot analysis of IPO4 expressed in Mouse brain, Rat brain, HeLa using IPO4 Rabbit pAb at 1:1000. Secondary antibody: HRP Goat Anti-Rabbit IgG (H+L) at 1:5000. Lysates/proteins: 30ug per lane. Blocking buffer: 5% non-fat dry milk in TBST. Detection: ECL Enhanced Kit. Exposure time: 120s.

实验步骤

访问官网浏览详情: www.ablybio.cn