

Angiotensinogen Rabbit pAb

货号: **AYP13869**

产品信息

反应	Human,Mouse,Rat
宿主	Rabbit
克隆性	Polyclonal
预测反应	WB: Rattus norvegicus
应用	WB IHC IF/ICC
推荐浓度	WB: 1:500 - 1:1000 IHC: 1:50 - 1:100 IF/ICC: 1:50 - 1:100
理论分子量	53kDa
实测分子量	53KDa
形式	Liquid
保存条件	Store at -20°C. Avoid freeze / thaw cycles. Buffer: PBS with 0.05% proclin300,50% glycerol,pH7.3.
偶联物	Unconjugated
阳性对照	Human plasma,Mouse plasma
细胞定位	Secreted
纯化	Affinity purification

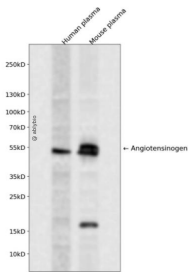
抗原信息

抗原信息	Recombinant fusion protein containing a sequence corresponding to amino acids 35-285 of human Angiotensinogen (NP_000020.1).
序列	RVYIHPFHLVIHNESTCEQLAKANAGPKDPTFIPAPIQAKTSPVDEKALQDQLVLAALKDTEDKLRAAMVGMLANFLGFR IYGMHSELWGVVHGATVLSPTAVFGTLASLYLGALDHTADRLQAILGVPWKDKNCTSRDLDAHKVLSALQAVQGLLVAQG RADSQAQLLLSTVVGVFTAPGLHLKQPFVQGLALYTPVVLPRSLDFTELDVAAEKIDRFMQAVTGWKTGCSLMGASVDST LAFNTYVHFQ

靶点信息

研究背景	The protein encoded by this gene, pre-angiotensinogen or angiotensinogen precursor, is expressed in the liver and is cleaved by the enzyme renin in response to lowered blood pressure. The resulting product, angiotensin I, is then cleaved by angiotensin converting enzyme (ACE) to generate the physiologically active enzyme angiotensin II. The protein is involved in maintaining blood pressure and in the pathogenesis of essential hypertension and preeclampsia. Mutations in this gene are associated with susceptibility to essential hypertension, and can cause renal tubular dysgenesis, a severe disorder of renal tubular development. Defects in this gene have also been associated with non-familial structural atrial fibrillation, and inflammatory bowel disease.
基因ID	183
基因名	AGT
Swiss	P01019
别名	AGT;ANHU;hFLT1

产品验证



Western blot analysis of Angiotensinogen expressed in Human plasma, Mouse plasma using Angiotensinogen Rabbit pAb at 1:1000. Secondary antibody: HRP Goat Anti-Rabbit IgG (H+L) at 1:5000. Lysates/proteins: 30ug per lane. Blocking buffer: 5% non-fat dry milk in TBST. Detection: ECL Enhanced Kit. Exposure time: 120s.

实验步骤

访问官网浏览详情: www.ablybio.cn