

# STAMBPL1 Rabbit pAb

货号: **AYP13848**

## 产品信息

反应	Mouse,Rat
宿主	Rabbit
克隆性	Polyclonal
预测反应	<b>WB:</b> Mus musculus
应用	<a href="#">WB</a>
推荐浓度	<b>WB:</b> 1:500 - 1:2000
理论分子量	49kDa/52kDa
实测分子量	50kDa
形式	Liquid
保存条件	Store at -20°C. Avoid freeze / thaw cycles. Buffer: PBS with 0.01% thiomersal,50% glycerol,pH7.3.
偶联物	Unconjugated
阳性对照	Rat brain
细胞定位	cytosol,endosome
纯化	Affinity purification

## 抗原信息

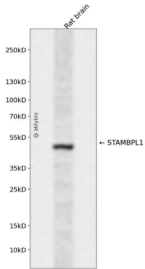
抗原信息	Recombinant fusion protein containing a sequence corresponding to amino acids 120-250 of human STAMBPL1 (NP_065850.1).
序列	ELKNDLLKKYNVEYQEYLQSKNKYKAEILKKLEHQRLIEAERKRIAQMRRQQLESEQLFFEDQLKKQELARGQMRSQQTS GLSEQIDGSALSFCSTHQNNLLNVFADQPNKSDATNYASHSPVNRALT

## 靶点信息

研究背景	Zinc metalloprotease that specifically cleaves 'Lys-63'-linked polyubiquitin chains. Does not cleave 'Lys-48'-linked polyubiquitin chains.
基因ID	57559
基因名	STAMBPL1

Swiss	Q96FJ0
别名	STAMBPL1;ALMalpha;AMSH-FP;AMSH-LP;bA399O19.2

## 产品验证



Western blot analysis of STAMBPL1 expressed in Rat brain using STAMBPL1 Rabbit pAb at 1:1000. Secondary antibody: HRP Goat Anti-Rabbit IgG (H+L) at 1:5000. Lysates/proteins: 30ug per lane. Blocking buffer: 5% non-fat dry milk in TBST. Detection: ECL Enhanced Kit. Exposure time: 120s.

## 实验步骤

访问官网浏览详情: [www.ablybio.cn](http://www.ablybio.cn)