

SLC52A3 Rabbit pAb

货号: **AYP13843**

产品信息

反应	Mouse
宿主	Rabbit
克隆性	Polyclonal
预测反应	WB: Homo sapiens
应用	WB
推荐浓度	WB: 1:500 - 1:2000
理论分子量	45kDa/50kDa
实测分子量	51kDa
形式	Liquid
保存条件	Store at -20°C. Avoid freeze / thaw cycles. Buffer: PBS with 0.01% thiomersal, 50% glycerol, pH7.3.
偶联物	Unconjugated
阳性对照	Mouse kidney
细胞定位	Apical cell membrane, Multi-pass membrane protein
纯化	Affinity purification

抗原信息

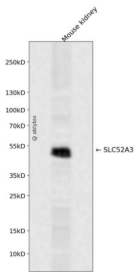
抗原信息	A synthetic peptide corresponding to a sequence within amino acids 200-300 of human SLC52A3 (NP_212134.3).
序列	PGMEAPLSHLESRYLPAHFSPLVFFLLSIMMACCLVAFFVLQRQPCWEASVEDLLNDQVTLHSIRPREENDLGPAQTVDSSQGGYLEEKAAPCCPAHL

靶点信息

研究背景	This gene encodes a riboflavin transporter protein that is strongly expressed in the intestine and likely plays a role in intestinal absorption of riboflavin. The protein is predicted to have eleven transmembrane domains and a cell surface localization signal in the C-terminus. Mutations at this locus have been associated with Brown-Vialetto-Van Laere syndrome and Fazio-Londe disease.
基因ID	113278

基因名	SLC52A3
Swiss	Q9NQ40
别名	SLC52A3;BVVLS;BVVLS1;C20orf54;RFT2;RFVT3;bA371L19.1;hRFT2

产品验证



Western blot analysis of SLC52A3 expressed in Mouse kidney using SLC52A3 Rabbit pAb at 1:1000. Secondary antibody: HRP Goat Anti-Rabbit IgG (H+L) at 1:5000. Lysates/proteins: 30ug per lane. Blocking buffer: 5% non-fat dry milk in TBST. Detection: ECL Enhanced Kit. Exposure time: 120s.

实验步骤

访问官网浏览详情: www.ablybio.cn