

ANT1/ANT2/ANT3/ANT4 Rabbit pAb

货号: **AYP13836**

产品信息

反应	Human,Mouse,Rat
宿主	Rabbit
克隆性	Polyclonal
预测反应	WB: Mus musculus
应用	WB IHC
推荐浓度	WB: 1:500 - 1:2000 IHC: 1:50 - 1:200
理论分子量	33kDa/32kDa/35kDa
实测分子量	30kDa
形式	Liquid
保存条件	Store at -20°C. Avoid freeze / thaw cycles. Buffer: PBS with 0.01% thiomersal,50% glycerol,pH7.3.
偶联物	Unconjugated
阳性对照	Mouse brain,Mouse skeletal muscle,Rat heart
细胞定位	mitochondrial inner membrane,mitochondrial membrane,mitochondrial permeability transition pore complex,mitochondrion,plasma membrane
纯化	Affinity purification

抗原信息

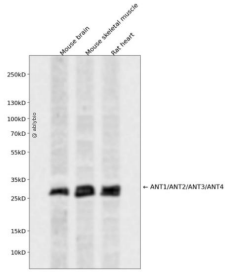
抗原信息	A synthetic peptide corresponding to a sequence within amino acids 200 to the C-terminus of human ANT 1 (NP_001142.2).
序列	GMLPDPKNVHIFVSWMIAQSVTAVAGLVSYPFDTVRRRMMMQSGRKGADIMYTGTVDCWRKIAKDEGAKAFFKGAWS NVL RGMGGAFVLVLYDEIKKYV

靶点信息

研究背景	
基因ID	291,292,293,83447
基因名	SLC25A4,SLC25A5,SLC25A6,SLC25A31

Swiss	P12235,P05141,P12236,Q9H0C2
别名	ANT1/ANT2/ANT3/ANT4

产品验证



Western blot analysis of ANT1/ANT2/ANT3/ANT4 expressed in Mouse brain, Mouse skeletal muscle, Rat heart using ANT1/ANT2/ANT3/ANT4 Rabbit pAb at 1:1000. Secondary antibody: HRP Goat Anti-Rabbit IgG (H+L) at 1:5000. Lysates/proteins: 30ug per lane. Blocking buffer: 5% non-fat dry milk in TB ST. Detection: ECL Enhanced Kit. Exposure time: 120s.

实验步骤

访问官网浏览详情: www.ablybio.cn