

# KDM2B Rabbit pAb

货号: **AYP13832**

## 产品信息

反应	Human
宿主	Rabbit
克隆性	Polyclonal
预测反应	<b>WB:</b> Homo sapiens
应用	<a href="#">WB</a>
推荐浓度	<b>WB:</b> 1:500 - 1:2000
理论分子量	63kDa/144kDa/149kDa/151kDa/152kDa
实测分子量	63kDa/144kDa/149kDa/151kDa/152kDa
形式	Liquid
保存条件	Store at -20°C. Avoid freeze / thaw cycles. Buffer: PBS with 0.01% thiomersal,50% glycerol,pH7.3.
偶联物	Unconjugated
阳性对照	
细胞定位	nucleolus,nucleoplasm,nucleus
纯化	Affinity purification

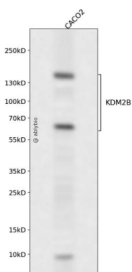
## 抗原信息

抗原信息	A synthetic peptide corresponding to a sequence within amino acids 600-700 of human KDM2B (XP_011537177.1).
序列	SGCSWIAVSALCSSSCPLLRLTDVQWVEGLKDAQMRDLLSPPTDNRPGQMDNRSKLRNIVELRLAGLDITDASLRLIIRHMLLSKLHLSYCNHVTDQSIN

## 靶点信息

研究背景	This gene encodes a member of the F-box protein family which is characterized by an approximately 40 amino acid motif, the F-box. The F-box proteins constitute one of the four subunits of ubiquitin protein ligase complex called SCFs (SKP1-cullin-F-box), which function in phosphorylation-dependent ubiquitination. The F-box proteins are divided into 3 classes: Fbws containing WD-40 domains, Fbls containing leucine-rich repeats, and Fbxs containing either different protein-protein interaction modules or no recognizable motifs. The protein encoded by this gene belongs to the Fbls class. Multiple alternatively spliced transcript variants have been found for this gene, but the full-length nature of some variants has not been determined.
基因ID	84678
基因名	KDM2B
Swiss	Q8NHM5
别名	KDM2B;CXXC2;FBXL10;Fbl10;JHDM1B;PCCX2

## 产品验证



Western blot analysis of KDM2B expressed in CACO2 using KDM2B Rabbit pAb at 1:1000. Secondary antibody: HRP Goat Anti-Rabbit IgG (H+L) at 1:5000. Lysates/proteins: 30ug per lane. Blocking buffer: 5% non-fat dry milk in TBST. Detection: ECL Enhanced Kit. Exposure time: 120s.

## 实验步骤

访问官网浏览详情: [www.ablybio.cn](http://www.ablybio.cn)