

LAMC1 Rabbit pAb

货号: **AYP13830**

产品信息

反应	Human,Mouse,Rat
宿主	Rabbit
克隆性	Polyclonal
预测反应	WB: Homo sapiens
应用	WB IHC
推荐浓度	WB: 1:100 - 1:500 IHC: 1:50 - 1:200
理论分子量	177kDa
实测分子量	220KDa
形式	Liquid
保存条件	Store at -20°C. Avoid freeze / thaw cycles. Buffer: PBS with 0.01% thiomersal,50% glycerol,pH7.3.
偶联物	Unconjugated
阳性对照	LO2,Mouse heart,Mouse kidney,Rat heart
细胞定位	basement membrane,endoplasmic reticulum lumen,extracellular exosome,extracellular region,extracellular space
纯化	Affinity purification

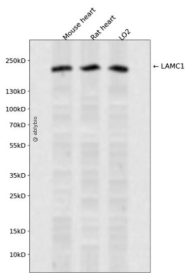
抗原信息

抗原信息	Recombinant fusion protein containing a sequence corresponding to amino acids 1300-1609 of human LAMC1 (NP_002284.3).
序列	IDQKLKDYEDLRDMRGKELEVKNLLEKKGKTEQQTADQLLARADAAKALAEAAKKGRDTLQEANDILNNLKDFDRRVND NKTAAEEALRKIPAINQTITEANEKTREAQQALGSAAADATEAKNKAHEAERIASAVQKNATSTKAEERTFAEVTDLNEV NNMLKQLQEAKEKLRKQDDADQDMMAGMASQAAQAEINARKAKNSVTSLLSIINDLLEQLGQLDVTDLNKLNEIEG TLNKAKDEMKVSDLRKVSDFLENAKKQEAAMDYNRDIEEIMKDIRNLEDIRKTLPSGCFNTPSIEKP

靶点信息

研究背景	Laminins, a family of extracellular matrix glycoproteins, are the major noncollagenous constituent of basement membranes. They have been implicated in a wide variety of biological processes including cell adhesion, differentiation, migration, signaling, neurite outgrowth and metastasis. Laminins, composed of 3 non identical chains: laminin alpha, beta and gamma. Some of the chains have been shown to differ with respect to their tissue distribution, presumably reflecting diverse functions in vivo. This gene encodes the gamma chain isoform laminin, gamma 1. The gamma 1 chain, formerly thought to be a beta chain, contains structural domains similar to beta chains, however, lacks the short alpha region separating domains I and II. The structural organization of this gene also suggested that it had diverged considerably from the beta chain genes. Embryos of transgenic mice in which both alleles of the gamma 1 chain gene were inactivated by homologous recombination, lacked basement membranes, indicating that laminin, gamma 1 chain is necessary for laminin heterotrimer assembly. It has been inferred by analogy with the strikingly similar 3' UTR sequence in mouse laminin gamma 1 cDNA, that multiple polyadenylation sites are utilized in human to generate the 2 different sized mRNAs (5.5 and 7.5 kb) seen on Northern analysis.
基因ID	3915
基因名	LAMC1
Swiss	P11047
别名	LAMC1;LAMB2

产品验证



Western blot analysis of LAMC1 expressed in Mouse heart, Rat heart, LO2 using LAMC1 Rabbit pAb at 1:1000. Secondary antibody: HRP Goat Anti-Rabbit IgG (H+L) at 1:5000. Lysates/proteins: 30ug per lane. Blocking buffer: 5% non-fat dry milk in TBST. Detection: ECL Enhanced Kit. Exposure time: 120s.

实验步骤

访问官网浏览详情: www.ablybio.cn