

TAP2 Rabbit pAb

货号: **AYP13826**

产品信息

反应	Human,Mouse,Rat
宿主	Rabbit
克隆性	Polyclonal
预测反应	WB: Mus musculus
应用	WB IHC IF/ICC
推荐浓度	WB: 1:100 - 1:500 IHC: 1:50 - 1:200 IF/ICC: 1:50 - 1:200
理论分子量	72kDa/75kDa
实测分子量	75KDa
形式	Liquid
保存条件	Store at -20°C. Avoid freeze / thaw cycles. Buffer: PBS with 0.05% proclin300,50% glycerol,pH7.3.
偶联物	Unconjugated
阳性对照	Rat spleen
细胞定位	Endoplasmic reticulum membrane,Multi-pass membrane protein
纯化	Affinity purification

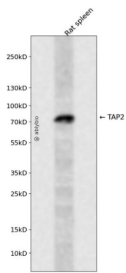
抗原信息

抗原信息	Recombinant fusion protein containing a sequence corresponding to amino acids 450-686 of human TAP2 (NP_001276972.1).
序列	QPNLPSPGTLAPTTLQGVVKFQDVSFAYPNRPDRPVLKGLTFTLRPGEVTALVGPNGSGKSTVAALLQNLYQPTGGQVLL DEKPISQYEHCYLHSQVSVGQEPVLFSGSVRNNIAYGLQSCEDDKVMAAAQAAHADDFIQEMEHGIYTDVGEKGSQLA AGQKQLAIARALVRDPRVLILDEATSALDVQCEQALQDWNSRGDRTVLVIAHRLQTVQRAHQILVLQEGKLQKLAQL

靶点信息

研究背景	The membrane-associated protein encoded by this gene is a member of the superfamily of ATP-binding cassette (ABC) transporters. ABC proteins transport various molecules across extra- and intra-cellular membranes. ABC genes are divided into seven distinct subfamilies (ABC1, MDR/TAP, MRP, ALD, OABP, GCN2, White). This protein is a member of the MDR/TAP subfamily. Members of the MDR/TAP subfamily are involved in multidrug resistance. This gene is located 7 kb telomeric to gene family member ABCB2. The protein encoded by this gene is involved in antigen presentation. This protein forms a heterodimer with ABCB2 in order to transport peptides from the cytoplasm to the endoplasmic reticulum. Mutations in this gene may be associated with ankylosing spondylitis, insulin-dependent diabetes mellitus, and celiac disease. Alternative splicing of this gene produces products which differ in peptide selectivity and level of restoration of surface expression of MHC class I molecules.
基因ID	6891
基因名	TAP2
Swiss	Q03519
别名	TAP2;ABC18;ABCB3;APT2;D6S217E;PSF-2;PSF2;RING11

产品验证



Western blot analysis of TAP2 expressed in Rat spleen using TAP2 Rabbit pAb at 1:1000. Secondary antibody: HRP Goat Anti-Rabbit IgG (H+L) at 1:5000. Lysates/proteins: 30ug per lane. Blocking buffer: 5% non-fat dry milk in TBST. Detection: ECL Enhanced Kit. Exposure time: 120s.

实验步骤

访问官网浏览详情: www.ablybio.cn