

PRL Rabbit pAb

货号: **AYP13823**

产品信息

反应	Human,Mouse,Rat
宿主	Rabbit
克隆性	Polyclonal
预测反应	WB: Homo sapiens
应用	WB
推荐浓度	WB: 1:500 - 1:1000
理论分子量	25kDa
实测分子量	26KDa
形式	Liquid
保存条件	Store at -20°C. Avoid freeze / thaw cycles. Buffer: PBS with 0.05% proclin300,50% glycerol,pH7.3.
偶联物	Unconjugated
阳性对照	Mouse brain,Rat brain
细胞定位	Secreted
纯化	Affinity purification

抗原信息

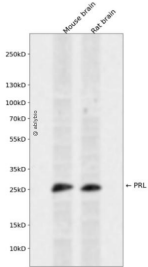
抗原信息	Recombinant fusion protein containing a sequence corresponding to amino acids 29-227 of human PRL (N P_001157030.1).
序列	LPICPGGAARCQVTLRDLFDRAVVLSHYIHNLSSSEMFSEFDKRYTHGRGFITKAINSCHTSSLATPEDKEQAQMQMNQKDFL SLIVSILRSWNEPLYHLVTEVRGMQEAPAILSKAVEIEEQTKRLLGEMELIVSQVHPETKENEIYPVWSGLPSLQMADEESRL SAYYNLLHCLRRDSHKIDNYLKLLKCRIIHNNNC

靶点信息

研究背景	This gene encodes the anterior pituitary hormone prolactin. This secreted hormone is a growth regulator for many tissues, including cells of the immune system. It may also play a role in cell survival by suppressing apoptosis, and it is essential for lactation. Alternative splicing results in multiple transcript variants that encode the same protein.
基因ID	5617

基因名	PRL
Swiss	P01236
别名	PRL;GHA1;prolactin

产品验证



Western blot analysis of PRL expressed in Mouse brain,Rat brain using PRL Rabbit pAb at 1:1000. Secondary antibody: HRP Goat Anti-Rabbit IgG (H+L) at 1:5000. Lysates/proteins: 30ug per lane. Blocking buffer: 5% non-fat dry milk in TBST. Detection: ECL Enhanced Kit. Exposure time: 120s.

实验步骤

访问官网浏览详情: www.ablybio.cn