

WBP11 Rabbit pAb

货号: **AYP13822**

产品信息

反应	Human,Mouse,Rat
宿主	Rabbit
克隆性	Polyclonal
预测反应	WB: Mus musculus
应用	WB IHC IF/ICC
推荐浓度	WB: 1:500 - 1:1000 IHC: 1:50 - 1:200 IF/ICC: 1:50 - 1:200
理论分子量	69kDa
实测分子量	115KDa
形式	Liquid
保存条件	Store at -20°C. Avoid freeze / thaw cycles. Buffer: PBS with 0.05% proclin300,50% glycerol,pH7.3.
偶联物	Unconjugated
阳性对照	RD,Mouse testis
细胞定位	Cytoplasm,Nucleus
纯化	Affinity purification

抗原信息

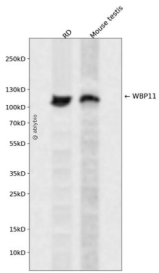
抗原信息	Recombinant fusion protein containing a sequence corresponding to amino acids 540-641 of human WBP11 (NP_057396.1).
序列	LIQRPKADD TSAATIEKKATATISAKPQITNPKAEITRFVPTALRVRRENGKATAAPQRKSEDDSAVPLAKAAPKSGSPVPSVQTKDDVYEAFMKEMEGLL

靶点信息

研究背景	This gene encodes a nuclear protein, which colocalizes with mRNA splicing factors and intermediate filament-containing perinuclear networks. This protein has 95% amino acid sequence identity to the mouse Wbp11 protein. It contains two proline-rich regions that bind to the WW domain of Npw38, a nuclear protein, and thus this protein is also called Npw38-binding protein NpwBP. The Npw38-NpwBP complex may function as a component of an mRNA factory in the nucleus.
------	--

基因ID	51729
基因名	WBP11
Swiss	Q9Y2W2
别名	WBP11;NPWBP;PPP1R165;SIPP1;WBP-11

产品验证



Western blot analysis of WBP11 expressed in RD, Mouse testis using WBP11 Rabbit pAb at 1:1000. Secondary antibody: HRP Goat Anti-Rabbit IgG (H+L) at 1:5000. Lysates/proteins: 30ug per lane. Blocking buffer: 5% non-fat dry milk in TBST. Detection: ECL Enhanced Kit. Exposure time: 120s.

实验步骤

访问官网浏览详情: www.ablybio.cn