

SLC6A9 Rabbit pAb

货号: **AYP13820**

产品信息

反应	Human,Mouse,Rat
宿主	Rabbit
克隆性	Polyclonal
预测反应	WB: Homo sapiens
应用	WB
推荐浓度	WB: 1:1000 - 1:5000
理论分子量	70kDa/72kDa/78kDa
实测分子量	75KDa
形式	Liquid
保存条件	Store at -20°C. Avoid freeze / thaw cycles. Buffer: PBS with 0.05% proclin300,50% glycerol,pH7.3.
偶联物	Unconjugated
阳性对照	MCF7,K-562,Mouse liver,C6
细胞定位	apical plasma membrane,basal plasma membrane,basolateral plasma membrane,endosome,hippocampal mossy fiber to CA3 synapse,lateral plasma membrane,parallel fiber to Purkinje cell synapse,plasma membrane,postsynaptic density,postsynaptic membrane,presynaptic membrane,synaptic vesicle membrane
纯化	Affinity purification

抗原信息

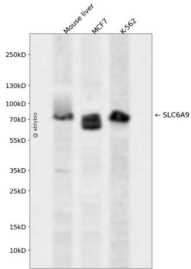
抗原信息	Recombinant fusion protein containing a sequence corresponding to amino acids 1-110 of human SLC6A9 (NP_964012.2).
序列	MSGGDTRAAIARPRMAAAHGPVAPSSPEQVTLIPVQVSFFLPPFSGATPSTSLAESVLKVVHGAYNSGLLPQLMAQHSLA MAQNGAVPSEATKRDQNLKRGNWGNQIEFV

靶点信息

研究背景	The amino acid glycine acts as an inhibitory neurotransmitter in the central nervous system. The protein encoded by this gene is one of two transporters that stop glycine signaling by removing it from the synaptic cleft.
基因ID	6536

基因名	SLC6A9
Swiss	P48067
别名	SLC6A9;GCENSG;GLYT1

产品验证



Western blot analysis of SLC6A9 expressed in Mouse liver, MCF7, K-562 using SLC6A9 Rabbit pAb at 1:1000. Secondary antibody: HRP Goat Anti-Rabbit IgG (H+L) at 1:5000. Lysates/proteins: 30ug per lane. Blocking buffer: 5% non-fat dry milk in TBST. Detection: ECL Enhanced Kit. Exposure time: 120s.

实验步骤

访问官网浏览详情: www.ablybio.cn