

PIMREG Rabbit pAb

货号: **AYP13816**

产品信息

反应	Human,Mouse,Rat
宿主	Rabbit
克隆性	Polyclonal
预测反应	WB: Homo sapiens
应用	WB
推荐浓度	WB: 1:500 - 1:1000
理论分子量	19kDa/24kDa 26kDa/27kDa
实测分子量	27KDa
形式	Liquid
保存条件	Store at -20°C. Avoid freeze / thaw cycles. Buffer: PBS with 0.05% proclin300,50% glycerol,pH7.3.
偶联物	Unconjugated
阳性对照	Mouse ovary,Mouse thymus,Rat thymus
细胞定位	nucleolus,nucleoplasm
纯化	Affinity purification

抗原信息

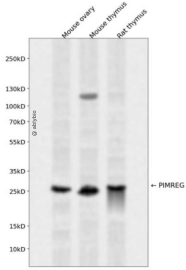
抗原信息	Recombinant fusion protein containing a sequence corresponding to amino acids 100-200 of human PIMREG (NP_001182157).
序列	IQESCQSGTKWLKETQVKARRRKRGAQKGGSPHSLKSTRLSGAAPAHSAADPWEKEHHRLSVRMGSHAHPLRRS RREAAFRSPYSSTEPLCSPSESD

靶点信息

研究背景	During mitosis, may play a role in the control of metaphase-to-anaphase transition.
基因ID	54478
基因名	PIMREG

Swiss	Q9BSJ6
别名	PIMREG;CATS;FAM64A;RCS1

产品验证



Western blot analysis of PIMREG expressed in Mouse ovary, Mouse thymus, Rat thymus using PIMREG Rabbit pAb at 1:1000. Secondary antibody: HRP Goat Anti-Rabbit IgG (H+L) at 1:5000. Lysates/proteins: 30ug per lane. Blocking buffer: 5% non-fat dry milk in TBST. Detection: ECL Enhanced Kit. Exposure time : 120s.

实验步骤

访问官网浏览详情: www.ablybio.cn