

IBSP Rabbit pAb

货号: **AYP13815**

产品信息

反应	Human,Mouse,Rat
宿主	Rabbit
克隆性	Polyclonal
预测反应	WB: canines
应用	WB
推荐浓度	WB: 1:500 - 1:2000
理论分子量	35kDa
实测分子量	35KDa
形式	Liquid
保存条件	Store at -20°C. Avoid freeze / thaw cycles. Buffer: PBS with 0.01% thiomersal,50% glycerol,pH7.3.
偶联物	Unconjugated
阳性对照	U2OS,U-138MG,Rat lung
细胞定位	Secreted
纯化	Affinity purification

抗原信息

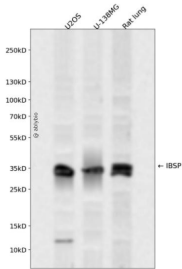
抗原信息	A synthetic peptide corresponding to a sequence within amino acids 1-100 of human IBSP (NP_004958.2).
序列	MKTALILLSILGMACAFSMKNLHRRVKIEDSEENGVFKYRPRYYLYKHAYFYPHLKRFPVQGSSDSSEENGDDSSSEEEEEEE ETSNEGENNEESNEDEDS

靶点信息

研究背景	The protein encoded by this gene is a major structural protein of the bone matrix. It constitutes approximately 12% of the noncollagenous proteins in human bone and is synthesized by skeletal-associated cell types, including hypertrophic chondrocytes, osteoblasts, osteocytes, and osteoclasts. The only extracellular site of its synthesis is the trophoblast. This protein binds to calcium and hydroxyapatite via its acidic amino acid clusters, and mediates cell attachment through an RGD sequence that recognizes the vitronectin receptor.
基因ID	3381

基因名	IBSP
Swiss	P21815
别名	IBSP;BNSP;BSP;BSP-II;SP-II

产品验证



Western blot analysis of IBSP expressed in U2OS,U-138MG,Rat lung using IBSP Rabbit pAb at 1:1000. Secondary antibody: HRP Goat Anti-Rabbit IgG (H+L) at 1:5000. Lysates/proteins: 30ug per lane. Blocking buffer: 5% non-fat dry milk in TBST. Detection: ECL Enhanced Kit. Exposure time: 120s.

实验步骤

访问官网浏览详情: www.ablybio.cn