

PTCD1 Rabbit pAb

货号: **AYP13814**

产品信息

反应	Human,Mouse,Rat
宿主	Rabbit
克隆性	Polyclonal
预测反应	WB: Homo sapiens
应用	WB IF/ICC
推荐浓度	WB: 1:500 - 1:2000 IF/ICC: 1:50 - 1:200
理论分子量	78kDa
实测分子量	79kDa
形式	Liquid
保存条件	Store at -20°C. Avoid freeze / thaw cycles. Buffer: PBS with 0.01% thiomersal,50% glycerol,pH7.3.
偶联物	Unconjugated
阳性对照	U-251MG,OVCAR3,A-549
细胞定位	mitochondrial matrix,mitochondrion
纯化	Affinity purification

抗原信息

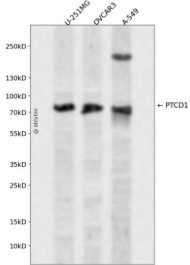
抗原信息	Recombinant fusion protein containing a sequence corresponding to amino acids 435-537 of human PTCD 1 (NP_056360.2).
序列	PVELEVNLLTPGAVPPTVVSFGTVTPADRLALIGGLEGLSKMAEHRQQPDIRTLTLLAEVVESGSPAESLLLALLDEHQVE ADLTFNTLVRKSKLGDLE

靶点信息

研究背景	This gene encodes a mitochondrial protein that binds leucine tRNAs and other mitochondrial RNAs and plays a role in the regulation of translation. Increased expression of this gene results in decreased mitochondrial leucine tRNA levels. Naturally occurring read-through transcription exists between upstream ATP5J2 (ATP synthase, H ⁺ transporting, mitochondrial Fo complex, subunit F2) and this gene.
基因ID	26024

基因名	PTCD1
Swiss	O75127
别名	PTCD1

产品验证



Western blot analysis of PTCD1 expressed in U-251MG, OVCAR3, A-549 using PTCD1 Rabbit pAb at 1:1000. Secondary antibody: HRP Goat Anti-Rabbit IgG (H+L) at 1:5000. Lysates/proteins: 30ug per lane. Blocking buffer: 5% non-fat dry milk in TBST. Detection: ECL Enhanced Kit. Exposure time: 120s.

实验步骤

访问官网浏览详情: www.ablybio.cn