

DTNBP1 Rabbit pAb

货号: **AYP13810**

产品信息

反应	Human,Mouse
宿主	Rabbit
克隆性	Polyclonal
预测反应	IHC: Homo sapiens
应用	WB IHC
推荐浓度	WB: 1:500 - 1:2000 IHC: 1:50 - 1:100
理论分子量	30kDa/34kDa/39kDa
实测分子量	48kDa
形式	Liquid
保存条件	Store at -20°C. Avoid freeze / thaw cycles. Buffer: PBS with 0.02% sodium azide,50% glycerol,pH7.3.
偶联物	Unconjugated
阳性对照	HeLa,Jurkat,HepG2,MCF7,DU145
细胞定位	Cell junction,Cytoplasm,Cytoplasmic side,Cytoplasmic vesicle,Cytoplasmic vesicle membrane,Endoplasmic reticulum,Endosome membrane,Melanosome membrane,Nucleus,Nucleus,Peripheral membrane protein ,postsynaptic cell membrane,postsynaptic density,secretory vesicle,synapse,synaptic vesicle membrane
纯化	Affinity purification

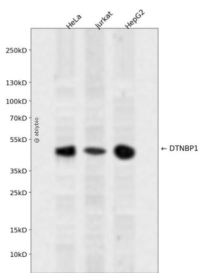
抗原信息

抗原信息	Recombinant fusion protein containing a sequence corresponding to amino acids 1-351 of human DTNBP 1 (NP_115498.2).
序列	MLETLRERLLSVQDFTSGLKTLSDKSREAKVKSKPRTPVFLPKYSAGLELLSRYEDTWAALHRRRAKDCASAGELVDSEVV MLSAHWEKKKTSLVLELQEQQLPALIADLESMTANLTHLEASFEEVENLLHLEDLCGQCCELERCKHMQSQQLENYKKN KRKELETFKAELDAEHAQKVLEMEHTQQMKLKERQKFFEEAFQQDMEQYLSTGYLQIAERREPIGSMSSMEVNVDMLEQ MDLMDISDQEALDVLNSGGEENTVLSPALGPESSTCQNEITLQVPNPSELRAKPPSSSSTCTDSATRDISEGGESPVVQS DEEEVQVDTALATSHTDREATPDGGEDSDS

靶点信息

研究背景	This gene encodes a protein that may play a role in organelle biogenesis associated with melanosomes, platelet dense granules, and lysosomes. A similar protein in mouse is a component of a protein complex termed biogenesis of lysosome-related organelles complex 1 (BLOC-1), and binds to alpha- and beta-dystrobrevins, which are components of the dystrophin-associated protein complex (DPC). Mutations in this gene are associated with Hermansky-Pudlak syndrome type 7. This gene may also be associated with schizophrenia. Multiple transcript variants encoding distinct isoforms have been identified for this gene.
基因ID	84062
基因名	DTNBP1
Swiss	Q96EV8
别名	DTNBP1;BLOC1S8;DBND;HPS7;My031;SDY;dysbindin

产品验证



Western blot analysis of DTNBP1 expressed in HeLa, Jurkat, HepG2 using DTNBP1 Rabbit pAb at 1:1000. Secondary antibody: HRP Goat Anti-Rabbit IgG (H+L) at 1:5000. Lysates/proteins: 30ug per lane. Blocking buffer: 5% non-fat dry milk in TBST. Detection: ECL Enhanced Kit. Exposure time: 120s.

实验步骤

访问官网浏览详情: www.ablybio.cn