

# CD11a/LFA-1A/ITGAL Rabbit pAb

货号: **AYP13807**

## 产品信息

反应	Human,Mouse,Rat
宿主	Rabbit
克隆性	Polyclonal
预测反应	<b>WB:</b> Homo sapiens <b>IHC:</b> Homo sapiens
应用	<a href="#">WB</a> <a href="#">IHC</a> <a href="#">IF/ICC</a>
推荐浓度	<b>WB:</b> 1:100 - 1:500 <b>IHC:</b> 1:50 - 1:100 <b>IF/ICC:</b> 1:50 - 1:100
理论分子量	119kDa/128kDa/134kDa
实测分子量	180KDa
形式	Liquid
保存条件	Store at -20°C. Avoid freeze / thaw cycles. Buffer: PBS with 0.05% proclin300,50% glycerol,pH7.3.
偶联物	Unconjugated
阳性对照	Molt-4,Mouse spleen,Rat spleen
细胞定位	Membrane,Single-pass type I membrane protein
纯化	Affinity purification

## 抗原信息

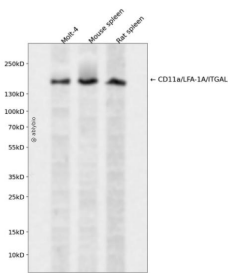
抗原信息	Recombinant fusion protein containing a sequence corresponding to amino acids 1-1170 of human CD11a /LFA-1A/ITGAL (P20701).
------	---

序列	MKDSCITVMAMALLSGFFFFAPASSYNLDVRGARSFSPPRAGRHFYRVLQVGNVIVGAPGEGNSTGSLYQCQSGTGH CLPVTLRGSNYTSKYLGMTLATDPTDGSILACDPGLSRTCDQNTYLSGLCYLFRQNLQGPMLQGRPGFQECIKGNVDLVF LFDGSMQLPDEFQKILDFMKDVMKKLSNTSYQFAAVQFSTSYKTEFDFSDYVVKRDPDALLKHVKHMLLLTNTFGAINY VATEVFREELGARPDATKVLIIITDGEATDSGNIDAAKDIIRYIIGIGKHFQTKESQETLHKFASKPASEFVKILDTFEKLKDLFT ELQKKIYVIEGTSKQDLTSFNMELSSSGISADLSRGHAVVGVAVGAKDWAGGFLLKADLQDDTFIGNEPLTPEVRAGYLG YTVTWLPSRQKTSLLASGAPRYQHMGRLVLLFQEPQGGGHWSVQVTIHTGTQIGSYFGGELCGVDVDQDGETELLIGAPL FYGEQRGGRVFIYQRRQLGFEEVSELQGDPGYPLGRFGEAITALTDINGDGLVDVAVGAPLEEQGAIVYIFNGRHGGLSPQ PSQRIEQTQVLSGIQWFGRSIHGVKDLQGLADVAVGAESQMIVLSSRPVDMVTLMSFSPAEIPVHEVECSYSTSNKM KEGVNITICFQIKSLIPQFQGRVANLTYTLQLDGHRTRRRGLFPGGRHELRRNIAVTTSMCTDFSHPVVCVQDLISPINV SLNFSLWEEETPRDQRAQKGDIPPIRPSLHSETWEIPFEKNCGEDKKCEANLRVFSFSPARSRALRLTAFASLSVELSLSN LEEDAYWVQLDLHFPPGLSFRKVEMLKPHSQIPVSCEELPEESRLLSRALSCNVSSPIFKAGHSVALQMMFNTLVNSSWG DSVELHANVTCNNEDSDLLEDNSATTIIPILYINILIQDQEDSTLYVSFTPKGPKIHQVKHMYQVRIQPSIHDHNIPTLEAVV VPQPPSEGPITHQWSVQMEPPVPCHYEDLERLPDAAEPCLPGALFRCPVVFRQEILVQVIGTLELVGEIEASSMFLCSLSI SFNSSKHFLHYGSNASLAQVVMKVDVVEYKQMLYLYVLSGIGLLLLLLLLLIFIVLYKVGFFKRNLKEKMEAGRVPNGIPAED SEQLASGQEAQDPGCLKPLHEKDSSESGGKGD
----	--

靶点信息

研究背景	ITGAL encodes the integrin alpha L chain. Integrins are heterodimeric integral membrane proteins composed of an alpha chain and a beta chain. This I-domain containing alpha integrin combines with the beta 2 chain (ITGB2) to form the integrin lymphocyte function-associated antigen-1 (LFA-1), which is expressed on all leukocytes. LFA-1 plays a central role in leukocyte intercellular adhesion through interactions with its ligands, ICAMs 1-3 (intercellular adhesion molecules 1 through 3), and also functions in lymphocyte costimulatory signaling. Two transcript variants encoding different isoforms have been found for this gene.
基因ID	3683
基因名	ITGAL
Swiss	P20701
别名	CD11A;LFA-1;LFA1A;CD11a;ITGAL

产品验证



Western blot analysis of CD11a/LFA-1A/ITGAL expressed in Molt-4, Mouse spleen, Rat spleen using CD11a/LFA-1A/ITGAL Rabbit pAb at 1:1000. Secondary antibody: HRP Goat Anti-Rabbit IgG (H+L) at 1:5000. Lysates/proteins: 30ug per lane. Blocking buffer: 5% non-fat dry milk in TBST. Detection: ECL Enhanced Kit. Exposure time: 120s.

实验步骤

访问官网浏览详情: [www.ablybio.cn](http://www.ablybio.cn)