

SFTPb Rabbit pAb

货号: **AYP13795**

产品信息

反应	Human,Mouse,Rat
宿主	Rabbit
克隆性	Polyclonal
预测反应	WB: Homo sapiens
应用	WB
推荐浓度	WB: 1:500 - 1:2000
理论分子量	42kDa
实测分子量	42kDa
形式	Liquid
保存条件	Store at -20°C. Avoid freeze / thaw cycles. Buffer: PBS with 0.02% sodium azide,50% glycerol,pH7.3.
偶联物	Unconjugated
阳性对照	Mouse liver,Mouse brain,Rat liver,Rat brain
细胞定位	Secreted,extracellular space,surface film
纯化	Affinity purification

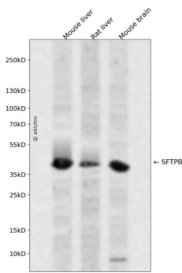
抗原信息

抗原信息	Recombinant fusion protein containing a sequence corresponding to amino acids 94-393 of human SFTPb (NP_000533.3).
序列	MAKEAIFQDTMRKFLEQECNVLPKLLMPQCNQVLDDYFPLVIDYFQNQTDSNGICMHLGLCKSRQPEPEQEPGMSDPLP KPLRDPLDPLLDKLVLPVLPALQARPGPHTQDLSEQQFPIPLPYCWLRCRALIKRIQAMIPKALAVAVAQVCRVVPLVAG GICQCLAERYSVILLDTLLGRMLPQLVCRVLVLRCSMDDSAGPRSPTGEWLPRDSECHLCMSVTTQAGNSSEQAIPQAMLQ ACVGSWLDREKCKQFVEQHTPQLLTLVPRGWDHAHTTCQALGVCVTMSSPLQCIHSPDL

靶点信息

研究背景	This gene encodes the pulmonary-associated surfactant protein B (SPB), an amphipathic surfactant protein essential for lung function and homeostasis after birth. Pulmonary surfactant is a surface-active lipoprotein complex composed of 90% lipids and 10% proteins which include plasma proteins and apolipoproteins SPA, SPB, SPC and SPD. The surfactant is secreted by the alveolar cells of the lung and maintains the stability of pulmonary tissue by reducing the surface tension of fluids that coat the lung. The SPB enhances the rate of spreading and increases the stability of surfactant monolayers in vitro. Multiple mutations in this gene have been identified, which cause pulmonary surfactant metabolism dysfunction type 1, also called pulmonary alveolar proteinosis due to surfactant protein B deficiency, and are associated with fatal respiratory distress in the neonatal period. Alternatively spliced transcript variants encoding the same protein have been identified.
基因ID	6439
基因名	SFTPB
Swiss	P07988
别名	SFTPB;PSP-B;SFTB3;SFTP3;SMDP1;SP-B

产品验证



Western blot analysis of SFTPB expressed in Mouse liver, Rat liver, Mouse brain using SFTPB Rabbit pAb at 1:1000. Secondary antibody: HRP Goat Anti-Rabbit IgG (H+L) at 1:5000. Lysates/proteins: 30ug per lane. Blocking buffer: 5% non-fat dry milk in TBST. Detection: ECL Enhanced Kit. Exposure time: 120s.

实验步骤

访问官网浏览详情: www.ablybio.cn