

RPGR Rabbit pAb

货号: **AYP13782**

产品信息

| | |
|-------|--|
| 反应 | Human,Mouse,Rat |
| 宿主 | Rabbit |
| 克隆性 | Polyclonal |
| 预测反应 | WB: Homo sapiens IHC: Homo sapiens |
| 应用 | WB IHC IF/ICC |
| 推荐浓度 | WB: 1:100 - 1:500 IHC: 1:50 - 1:200 IF/ICC: 1:50 - 1:200 |
| 理论分子量 | 52kDa/70kDa/83kDa/90kDa/113kDa/127kDa |
| 实测分子量 | 113KDa |
| 形式 | Liquid |
| 保存条件 | Store at -20°C. Avoid freeze / thaw cycles. Buffer: PBS with 0.05% proclin300,50% glycerol,pH7.3. |
| 偶联物 | Unconjugated |
| 阳性对照 | Mouse brain,Rat testis |
| 细胞定位 | Cytoplasm,Golgi apparatus,centrosome,cilium axoneme,cilium basal body,cytoskeleton,flagellum axoneme,microtubule organizing center |
| 纯化 | Affinity purification |

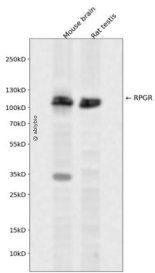
抗原信息

| | |
|------|--|
| 抗原信息 | Recombinant fusion protein containing a sequence corresponding to amino acids 1-260 of human RPGR (NP_001030025.1). |
| 序列 | MREPEELMPDSGAVFTFGKSKFAENPNPGKFWFKNDVPHVHLSCGDEHSAVVTGNNKLYMFGSNNWGQLGLGSKSAISKP TCVKALKPEKVKLAACGRNHTLVSTEGGNVYATGGNNEGQLGLGDTEERNTFHVISFFTSEHKIKQLSAGSNTSAALTED GRLFMWGDNSEGQIGLKNVSNVCVPQQVTIGKPVSWISCGYYHSAFVTTDGEELYVFGEPENGLGLPNQLLGNHRTPQL VSEIPEKVIQVACGGEHTVVLTE |

靶点信息

| | |
|-------|---|
| 研究背景 | This gene encodes a protein with a series of six RCC1-like domains (RLDs), characteristic of the highly conserved guanine nucleotide exchange factors. The encoded protein is found in the Golgi body and interacts with RPGRIP1. This protein localizes to the outer segment of rod photoreceptors and is essential for the rod viability. Mutations in this gene have been associated with X-linked retinitis pigmentosa (XLRP). Multiple alternatively spliced transcript variants that encode different isoforms of this gene have been reported, but the full-length nature of only some have been determined. |
| 基因ID | 6103 |
| 基因名 | RPGR |
| Swiss | Q92834 |
| 别名 | RPGR;COD1;CORDX1;CRD;PCDX;RP15;RP3;XLRP3;orf15 |

产品验证



Western blot analysis of RPGR expressed in Mouse brain, Rat testis using RPGR Rabbit pAb at 1:1000. Secondary antibody: HRP Goat Anti-Rabbit IgG (H+L) at 1:5000. Lysates/proteins: 30ug per lane. Blocking buffer: 5% non-fat dry milk in TBST. Detection: ECL Enhanced Kit. Exposure time: 120s.

实验步骤

访问官网浏览详情: www.ablybio.cn