

ZFP36 Rabbit pAb

货号: **AYP13775**

产品信息

反应	Human,Mouse
宿主	Rabbit
克隆性	Polyclonal
预测反应	WB: Homo sapiens
应用	WB
推荐浓度	WB: 1:500 - 1:1000
理论分子量	34kDa
实测分子量	29kDa
形式	Liquid
保存条件	Store at -20°C. Avoid freeze / thaw cycles. Buffer: PBS with 0.05% proclin300,50% glycerol,pH7.3.
偶联物	Unconjugated
阳性对照	WiDr
细胞定位	Cytoplasm,Nucleus
纯化	Affinity purification

抗原信息

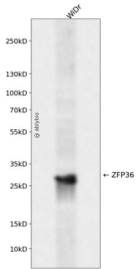
抗原信息	Recombinant fusion protein containing a sequence corresponding to amino acids 230-326 of human ZFP36 (NP_003398.3).
序列	SAFSAAPGTPLARRDPTVCCPSCRRATPISVWGPLGGLVRTPSVQSLGSDPDEYASSGSSLGGSDSPVFEAGVFAPPQVAAPRRLLPIFNRIQVSE

靶点信息

研究背景	Enables several functions, including 14-3-3 protein binding activity; heat shock protein binding activity; and mRNA 3'-UTR AU-rich region binding activity. Involved in several processes, including cellular response to cytokine stimulus; cellular response to growth factor stimulus; and regulation of gene expression. Acts upstream of or within mRNA catabolic process. Located in cytoplasmic ribonucleoprotein granule; cytosol; and nucleus. Part of ribonucleoprotein complex. Colocalizes with RISC-loading complex.
基因ID	7538

基因名	ZFP36
Swiss	P26651
别名	ZFP36;GOS24;GOS24;NUP475;RNF162A;TIS11;TTP;zfp-36

产品验证



Western blot analysis of ZFP36 expressed in WiDr using ZFP36 Rabbit pAb at 1:1000. Secondary antibody: HRP Goat Anti-Rabbit IgG (H+L) at 1:5000. Lysates/proteins: 30ug per lane. Blocking buffer: 5% non-fat dry milk in TBST. Detection: ECL Enhanced Kit. Exposure time: 120s.

实验步骤

访问官网浏览详情: www.ablybio.cn