

ABCG8 Rabbit pAb

货号: **AYP13774**

产品信息

反应	Human
宿主	Rabbit
克隆性	Polyclonal
预测反应	WB: Mus musculus
应用	WB IF/ICC
推荐浓度	WB: 1:500 - 1:1000 IF/ICC: 1:50 - 1:200
理论分子量	75kDa
实测分子量	76KDa
形式	Liquid
保存条件	Store at -20°C. Avoid freeze / thaw cycles. Buffer: PBS with 0.02% sodium azide,50% glycerol,pH7.3.
偶联物	Unconjugated
阳性对照	LO2
细胞定位	Membrane,Multi-pass membrane protein
纯化	Affinity purification

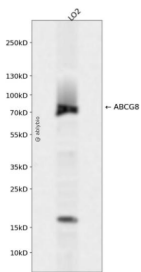
抗原信息

抗原信息	Recombinant fusion protein containing a sequence corresponding to amino acids 1-320 of human ABCG8 (NP_071882.1).
序列	MAGKAAEERGLPKGATPQDTSGLQDRLFSSSDNSLYFTYSGQPNTLEVRDLNYQVDLASQVPWFQLAQFKMPWTSP SCQNSCELGIQNLFSKVRSGQMLAIIGSSGCGRASLLDVITGRGHGGKIKSGQIWINGQPSSPQLVRKCVAHVRQHNQLL PNLTVRETLAFIAQMRLPRTFSQAQRDKRVEDVIAELRLRQCADTRVGNMYVRGLSGGERRRVSIGVQLLWNPGLILDEPT SGLDSFTAHNLVKTL SRLAKGNRLVLISLHQPRSDIFRLFDLVLLMTSGTPIYLGAAQHMVQYFTAIGYPCPRYSNPADF

靶点信息

研究背景	The protein encoded by this gene is a member of the superfamily of ATP-binding cassette (ABC) transporters. ABC proteins transport various molecules across extra- and intra-cellular membranes. ABC genes are divided into seven distinct subfamilies (ABC1, MDR/TAP, MRP, ALD, OABP, GCN20, White). This protein is a member of the White subfamily. The protein encoded by this gene functions to exclude non-cholesterol sterol entry at the intestinal level, promote excretion of cholesterol and sterols into bile, and to facilitate transport of sterols back into the intestinal lumen. It is expressed in a tissue-specific manner in the liver, in testine, and gallbladder. This gene is tandemly arrayed on chromosome 2, in a head-to-head orientation with family member ABCG5. Mutations in this gene may contribute to sterol accumulation and atherosclerosis, and have been observed in patients with sitosterolemia.
基因ID	64241
基因名	ABCG8
Swiss	Q9H221
别名	ABCG8;GBD4;STSL

产品验证



Western blot analysis of ABCG8 expressed in LO2 using ABCG8 Rabbit pAb at 1:1000. Secondary antibody : HRP Goat Anti-Rabbit IgG (H+L) at 1:5000. Lysates/proteins: 30ug per lane. Blocking buffer: 5% non-fat dry milk in TBST. Detection: ECL Enhanced Kit. Exposure time: 120s.

实验步骤

访问官网浏览详情: www.ablybio.cn