

INSIG2 Rabbit pAb

货号: AYP13765

产品信息

反应	Human,Mouse,Rat
宿主	Rabbit
克隆性	Polyclonal
预测反应	RT-PCR: Mus musculus WB: Mus musculus
应用	WB IHC
推荐浓度	WB: 1:500 - 1:1000 IHC: 1:50 - 1:200
理论分子量	24kDa
实测分子量	30KDa
形式	Liquid
保存条件	Store at -20°C. Avoid freeze / thaw cycles. Buffer: PBS with 0.05% proclin300,50% glycerol,pH7.3.
偶联物	Unconjugated
阳性对照	Mouse kidney,Rat brain,Rat heart
细胞定位	Endoplasmic reticulum membrane,Multi-pass membrane protein
纯化	Affinity purification

抗原信息

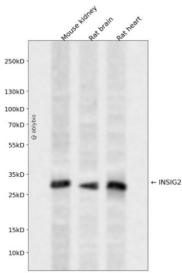
抗原信息	A synthetic peptide corresponding to a sequence within amino acids 50-150 of human INSIG2 (NP_057217.2).
序列	QIQRNVTLPFPDVIASIFSSAWVWPCCGTASAVIGLLYPCIDRHLGEPHKFKREWSSVMRCVAVFVGINHASAKVDFDNN IQLSLTLAALSIGLWWTFR

靶点信息

研究背景	The protein encoded by this gene is highly similar to the protein product encoded by gene INSIG1. Both INSIG1 protein and this protein are endoplasmic reticulum proteins that block the processing of sterol regulatory element binding proteins (SREBPs) by binding to SREBP cleavage-activating protein (SCAP), and thus prevent SCAP from escorting SREBPs to the Golgi.
------	--

基因ID	51141
基因名	INSIG2
Swiss	Q9Y5U4
别名	INSIG2;INSIG-2

产品验证



Western blot analysis of INSIG2 expressed in Mouse kidney,Rat brain,Rat heart using INSIG2 Rabbit pAb at 1:1000. Secondary antibody: HRP Goat Anti-Rabbit IgG (H+L) at 1:5000. Lysates/proteins: 30ug per lane. Blocking buffer: 5% non-fat dry milk in TBST. Detection: ECL Enhanced Kit. Exposure time: 120s.

实验步骤

访问官网浏览详情: www.ablybio.cn