

SLAMF1 Rabbit pAb

货号: **AYP13759**

产品信息

反应	Human,Mouse
宿主	Rabbit
克隆性	Polyclonal
预测反应	IF: Canis lupus familiaris Co-IP: Canis lupus familiaris
应用	WB
推荐浓度	WB: 1:500 - 1:2000
理论分子量	33kDa/37kDa/40kDa
实测分子量	37kDa/65kDa
形式	Liquid
保存条件	Store at -20°C. Avoid freeze / thaw cycles. Buffer: PBS with 0.02% sodium azide,50% glycerol,pH7.3.
偶联物	Unconjugated
阳性对照	Jurkat,Mouse liver
细胞定位	Cell membrane,Single-pass type I membrane protein
纯化	Affinity purification

抗原信息

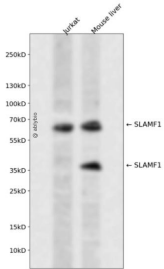
抗原信息	Recombinant fusion protein containing a sequence corresponding to amino acids 21-237 of human SLAMF 1 (NP_003028.1).
序列	ASYGTGGRMMNCPKILRQLGSKVLLPLTYERINKSMNKSIHIVVTMAKSLNSVENKIVSLDPSEAGPPRYLGDYKFFYLENL TLGIRESRKEDEGWYLMTLEKNVSVQRFCLQLRLYEQVSTPEIKVLNKTQENGTCTLLIGCTVEKGDHVAYSWSEKAGTHP LNPANSSHLLSLTLGPQHADNIYICTVSNPISNNSQTFSPWPGCRTDPSETKP

靶点信息

研究背景	SLAM-induced signal-transduction events in T-lymphocytes are different from those in B-cells. Two modes of SLAM signaling are likely to exist: one in which the inhibitor SH2D1A acts as a negative regulator and a another in which protein-tyrosine phosphatase 2C (PTPN11)-dependent signal transduction operates.
基因ID	6504

基因名	SLAMF1
Swiss	Q13291
别名	SLAMF1;CD150;CDw150;SLAM

产品验证



Western blot analysis of SLAMF1 expressed in Jurkat, Mouse liver using SLAMF1 Rabbit pAb at 1:1000. Secondary antibody: HRP Goat Anti-Rabbit IgG (H+L) at 1:5000. Lysates/proteins: 30ug per lane. Blocking buffer: 5% non-fat dry milk in TBST. Detection: ECL Enhanced Kit. Exposure time: 120s.

实验步骤

访问官网浏览详情: www.ablybio.cn