

# CREB3L3 Rabbit pAb

货号: **AYP13749**

## 产品信息

反应	Human,Rat
宿主	Rabbit
克隆性	Polyclonal
预测反应	<b>WB:</b> Mus musculus
应用	<a href="#">WB</a>
推荐浓度	<b>WB:</b> 1:500 - 1:1000
理论分子量	35kDa/48kDa/49kDa
实测分子量	70KDa
形式	Liquid
保存条件	Store at -20°C. Avoid freeze / thaw cycles. Buffer: PBS with 0.01% thiomersal,50% glycerol,pH7.3.
偶联物	Unconjugated
阳性对照	HepG2
细胞定位	cytosol,endoplasmic reticulum,nucleoplasm,nucleus
纯化	Affinity purification

## 抗原信息

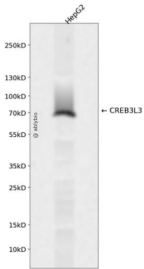
抗原信息	Recombinant fusion protein containing a sequence corresponding to amino acids 371-460 of human CREB 3L3 (NP_001258924.1).
序列	AADAVPGSEAPGPRPEADTTREESPGSPGADWGFQDTANLTNSTEELDNATLVLRNATEGLGQVALLDWVAPGPSTGS GRAGLEAAGDEL

## 靶点信息

研究背景	This gene encodes a member of the basic-leucine zipper family and the AMP-dependent transcription factor family. The encoded protein is localized to the endoplasmic reticulum and acts as a transcription factor activated by cyclic AMP stimulation. The encoded protein binds the cyclic AMP response element (CRE) and the box-B element and has been linked to acute inflammatory response, hepatocellular carcinoma, triglyceride metabolism, and hepcidin expression. Alternative splicing results in multiple transcript variants.
基因ID	84699

基因名	CREB3L3
Swiss	Q68CJ9
别名	CREB3L3;CREB-H;CREBH;HYST1481

## 产品验证



Western blot analysis of CREB3L3 expressed in HepG2 using CREB3L3 Rabbit pAb at 1:1000. Secondary antibody: HRP Goat Anti-Rabbit IgG (H+L) at 1:5000. Lysates/proteins: 30ug per lane. Blocking buffer: 5% non-fat dry milk in TBST. Detection: ECL Enhanced Kit. Exposure time: 120s.

## 实验步骤

访问官网浏览详情: [www.ablybio.cn](http://www.ablybio.cn)