

YPEL3 Rabbit pAb

货号: **AYP13741**

产品信息

反应	Mouse,Rat
宿主	Rabbit
克隆性	Polyclonal
预测反应	WB: Capra hircus IHC: Capra hircus IF: Capra hircus
应用	WB
推荐浓度	WB: 1:500 - 1:2000
理论分子量	13kDa/17kDa
实测分子量	17kDa
形式	Liquid
保存条件	Store at -20°C. Avoid freeze / thaw cycles. Buffer: PBS with 0.01% thiomersal,50% glycerol,pH7.3.
偶联物	Unconjugated
阳性对照	Rat spleen
细胞定位	Nucleus,nucleolus
纯化	Affinity purification

抗原信息

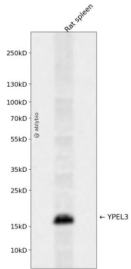
抗原信息	Recombinant fusion protein containing a sequence corresponding to amino acids 1-119 of human YPEL3 (NP_001138996.1).
序列	MVRISKPKTFQAYLDDCHRRYSCAHCRAHLANHDDLISKSFQGSQGRAYLFNSVNVGCGPAEERVLLTGLHAVADIHCE NCKTTLGWKYEQAFESSQKYKEGKYIIELNHMIKDNGWD

靶点信息

研究背景	Involved in proliferation and apoptosis in myeloid precursor cells.
基因ID	83719

基因名	YPEL3
Swiss	P61236
别名	YPEL3

产品验证



Western blot analysis of YPEL3 expressed in Rat spleen using YPEL3 Rabbit pAb at 1:1000. Secondary antibody: HRP Goat Anti-Rabbit IgG (H+L) at 1:5000. Lysates/proteins: 30ug per lane. Blocking buffer: 5% no n-fat dry milk in TBST. Detection: ECL Enhanced Kit. Exposure time: 120s.

实验步骤

访问官网浏览详情: www.ablybio.cn