

HKDC1 Rabbit pAb

货号: **AYP13740**

产品信息

反应	Human
宿主	Rabbit
克隆性	Polyclonal
预测反应	WB: Mus musculus
应用	WB
推荐浓度	WB: 1:500 - 1:2000
理论分子量	82kDa/90kDa/102kDa
实测分子量	120kDa
形式	Liquid
保存条件	Store at -20°C. Avoid freeze / thaw cycles. Buffer: PBS with 0.01% thiomersal, 50% glycerol, pH7.3.
偶联物	Unconjugated
阳性对照	U-251MG, A-549, 293T, SW620
细胞定位	cytoplasm, cytosol, mitochondrial membrane, mitochondrion
纯化	Affinity purification

抗原信息

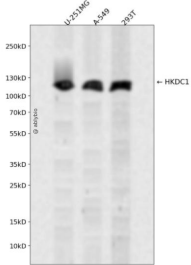
抗原信息	A synthetic peptide corresponding to a sequence within amino acids 150-250 of human HKDC1 (NP_079406.3).
序列	LGLTFSFPCRQTKLEEGVLLSWTKKFKARGVQDQDVSRLTKAMRRHKMDVDILALVNDTVGTMTCAYDDPYCEVG VIIGTGTNACYMEDMSNIDLVEG

靶点信息

研究背景	This gene encodes a member of the hexokinase protein family. The encoded protein is involved in glucose metabolism, and reduced expression may be associated with gestational diabetes mellitus. High expression of this gene may also be associated with poor prognosis in hepatocarcinoma.
基因ID	80201

基因名	HKDC1
Swiss	Q2TB90
别名	HKDC1

产品验证



Western blot analysis of HKDC1 expressed in U-251MG,A-549,293T using HKDC1 Rabbit pAb at 1:1000. Secondary antibody: HRP Goat Anti-Rabbit IgG (H+L) at 1:5000. Lysates/proteins: 30ug per lane. Blocking buffer: 5% non-fat dry milk in TBST. Detection: ECL Enhanced Kit. Exposure time: 120s.

实验步骤

访问官网浏览详情: www.ablybio.cn