

ERVW-1 Rabbit pAb

货号: **AYP13738**

产品信息

反应	Human,Mouse
宿主	Rabbit
克隆性	Polyclonal
预测反应	WB: Homo sapiens
应用	WB
推荐浓度	WB: 1:500 - 1:1000
理论分子量	59kDa
实测分子量	60KDa
形式	Liquid
保存条件	Store at -20°C. Avoid freeze / thaw cycles. Buffer: PBS with 0.05% proclin300,50% glycerol,pH7.3.
偶联物	Unconjugated
阳性对照	BeWo
细胞定位	Cell membrane,Peripheral membrane protein,Single-pass type I membrane protein,Virion
纯化	Affinity purification

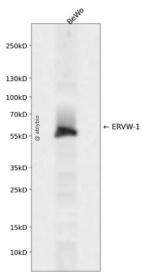
抗原信息

抗原信息	A synthetic peptide corresponding to a sequence within amino acids 1-100 of human ERVW-1 (NP_001124397.1).
序列	MALPYHIFLFTVLLPSFTLTAPPPCRMTSSSPYQEFWRMQRPGNIDAPSYRSLSKGTPFTTAHTHMPRNCYHSATLCMH ANTHYWTGKMINPSCPGGL

靶点信息

研究背景	Many different human endogenous retrovirus (HERV) families are expressed in normal placental tissue at high levels, suggesting that HERVs are functionally important in reproduction. This gene is part of an HERV provirus on chromosome 7 that has inactivating mutations in the gag and pol genes. This gene is the envelope glycoprotein gene which appears to have been selectively preserved. The gene's protein product is expressed in the placental syncytiotrophoblast and is involved in fusion of the cytotrophoblast cells to form the syncytial layer of the placenta. The protein has the characteristics of a typical retroviral envelope protein, including a furin cleavage site that separates the surface (SU) and transmembrane (TM) proteins which form a heterodimer. Alternatively spliced transcript variants encoding the same protein have been found for this gene.
基因ID	30816
基因名	ERVW-1
Swiss	Q9UQF0
别名	ERVW-1;ENV;ENVW;ERVWE1;HERV-7q;HERV-W-ENV;HERV7Q;HERVW;HERVWENV

产品验证



Western blot analysis of ERVW-1 expressed in BeWo using ERVW-1 Rabbit pAb at 1:1000. Secondary antibody: HRP Goat Anti-Rabbit IgG (H+L) at 1:5000. Lysates/proteins: 30ug per lane. Blocking buffer: 5% non-fat dry milk in TBST. Detection: ECL Enhanced Kit. Exposure time: 120s.

实验步骤

访问官网浏览详情: www.ablybio.cn