

Slc31a2 Rabbit pAb

货号: AYP13726

产品信息

反应	Mouse
宿主	Rabbit
克隆性	Polyclonal
预测反应	WB: Horabagrus nigricollaris, Homo sapiens
应用	WB
推荐浓度	WB: 1:500 - 1:2000
理论分子量	15kDa
实测分子量	16kDa
形式	Liquid
保存条件	Store at -20°C. Avoid freeze / thaw cycles. Buffer: PBS with 0.01% thiomersal, 50% glycerol, pH7.3.
偶联物	Unconjugated
阳性对照	Mouse pancreas
细胞定位	Membrane, Multi-pass membrane protein
纯化	Affinity purification

抗原信息

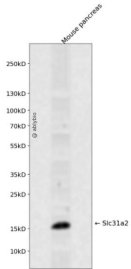
抗原信息	A synthetic peptide corresponding to a sequence within amino acids 1-100 of mouse Slc31a2 (NP_001277447.1).
序列	MHFIFSDEAVLLDFWVRVHSP TGMALSVLVVLLAVLYEGIKV GKAKLLHKTLESLPATNSQQFILGPDQDSTGSRSTSDN RTRLRWFLCYFGQSLVHVI

靶点信息

研究背景	Involved in low-affinity copper uptake.
基因ID	20530
基因名	

Swiss	O15432
别名	SLC31A2;COPT2;CTR2;hCTR2;AI604396;Slc31a2

产品验证



Western blot analysis of Slc31a2 expressed in Mouse pancreas using Slc31a2 Rabbit pAb at 1:1000. Secondary antibody: HRP Goat Anti-Rabbit IgG (H+L) at 1:5000. Lysates/proteins: 30ug per lane. Blocking buffer: 5% non-fat dry milk in TBST. Detection: ECL Enhanced Kit. Exposure time: 120s.

实验步骤

访问官网浏览详情: www.ablybio.cn