

LCK Rabbit pAb

货号: **AYP13712**

产品信息

| | |
|-------|--|
| 反应 | Human,Mouse,Rat |
| 宿主 | Rabbit |
| 克隆性 | Polyclonal |
| 预测反应 | WB: Homo sapiens |
| 应用 | WB IHC |
| 推荐浓度 | WB: 1:500 - 1:1000 IHC: 1:50 - 1:200 |
| 理论分子量 | 40kDa/58kDa/61kDa |
| 实测分子量 | 58KDa |
| 形式 | Liquid |
| 保存条件 | Store at -20°C. Avoid freeze / thaw cycles. Buffer: PBS with 0.01% thiomersal,50% glycerol,pH7.3. |
| 偶联物 | Unconjugated |
| 阳性对照 | Raji,Mouse lung,Mouse thymus |
| 细胞定位 | Cell membrane,Cytoplasm,Cytoplasmic side,Lipid-anchor |
| 纯化 | Affinity purification |

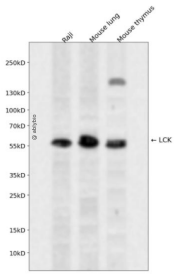
抗原信息

| | |
|------|---|
| 抗原信息 | Recombinant fusion protein containing a sequence corresponding to amino acids 1-240 of human LCK (NP_001036236.1). |
| 序列 | MGCGCSSHPEDDWMENIDVCENCHYPIVPLDGKGTLLIRNGSEVRDPLVTYEGSNPPASPLQDNLVIALHSYEPSHDGDL GFEKGEQLRILEQSGEWWKAQSLTTGQEGFIPFNFAKANSLEPEPWFFKNLSRKDAERQLLAPGNTHGSFLIRESESTA GSFSLSVRDFDQNGEVVKHYKIRNLDNNGGFYISPRITFPGLHELVRHYTNASDGLCTRLSRPCQTQKPQKPWWEDEWE V |

靶点信息

| | |
|-------|--|
| 研究背景 | This gene is a member of the Src family of protein tyrosine kinases (PTKs). The encoded protein is a key signaling molecule in the selection and maturation of developing T-cells. It contains N-terminal sites for myristylation and palmitoylation, a PTK domain, and SH2 and SH3 domains which are involved in mediating protein-protein interactions with phosphotyrosine-containing and proline-rich motifs, respectively. The protein localizes to the plasma membrane and pericentrosomal vesicles, and binds to cell surface receptors, including CD4 and CD8, and other signaling molecules. Multiple alternatively spliced variants encoding different isoforms have been described. |
| 基因ID | 3932 |
| 基因名 | LCK |
| Swiss | P06239 |
| 别名 | LCK;IMD22;LSK;YT16;p56lck;pp58lck |

产品验证



Western blot analysis of LCK expressed in Raji, Mouse lung, Mouse thymus using LCK Rabbit pAb at 1:1000. Secondary antibody: HRP Goat Anti-Rabbit IgG (H+L) at 1:5000. Lysates/proteins: 30ug per lane. Blocking buffer: 5% non-fat dry milk in TBST. Detection: ECL Enhanced Kit. Exposure time: 120s.

实验步骤

访问官网浏览详情: www.ablybio.cn