

KDM3B Rabbit pAb

货号: **AYP13699**

产品信息

反应	Human
宿主	Rabbit
克隆性	Polyclonal
预测反应	WB: Mus musculus
应用	WB IHC
推荐浓度	WB: 1:500 - 1:2000 IHC: 1:50 - 1:200
理论分子量	84kDa/154kDa/191kDa
实测分子量	225KDa
形式	Liquid
保存条件	Store at -20°C. Avoid freeze / thaw cycles. Buffer: PBS with 0.01% thiomersal,50% glycerol,pH7.3.
偶联物	Unconjugated
阳性对照	HeLa
细胞定位	Nucleus
纯化	Affinity purification

抗原信息

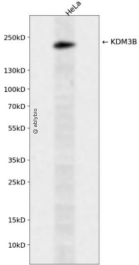
抗原信息	Recombinant fusion protein containing a sequence corresponding to amino acids 400-600 of human KDM 3B (NP_057688.2).
序列	GAENKEAGKTLEQVQGIVASAAVVTTASSTPNTVRISDTGLAAGTVPEKQKGSRSQASGENSRNSILASSGFGAPLPSS SQPLTFGSGRSQSNGLATENKPLGFSGCQSSAQEAQKDTDLKLNLFQCMSQTLPTSNYFTTVSESLADDSSSRDSFK QSLESLSSGLCKGRSVLGTDTKPGSKAGSSVDRKVPAESMPT

靶点信息

研究背景	Histone demethylase that specifically demethylates 'Lys-9' of histone H3, thereby playing a central role in histone code. Demethylation of Lys residue generates formaldehyde and succinate. May have tumor suppressor activity.
基因ID	51780

基因名	KDM3B
Swiss	Q7LBC6
别名	KDM3B;5qNCA;C5orf7;JMJD1B;NET22

产品验证



Western blot analysis of KDM3B expressed in HeLa using KDM3B Rabbit pAb at 1:1000. Secondary antibody: HRP Goat Anti-Rabbit IgG (H+L) at 1:5000. Lysates/proteins: 30ug per lane. Blocking buffer: 5% non-fat dry milk in TBST. Detection: ECL Enhanced Kit. Exposure time: 120s.

实验步骤

访问官网浏览详情: www.ablybio.cn