

Mfsd2a Rabbit pAb

货号: **AYP13694**

产品信息

反应	Human,Mouse,Rat
宿主	Rabbit
克隆性	Polyclonal
预测反应	WB: Mus musculus
应用	WB
推荐浓度	WB: 1:500 - 1:2000
理论分子量	59kDa
实测分子量	59kDa
形式	Liquid
保存条件	Store at -20°C. Avoid freeze / thaw cycles. Buffer: PBS with 0.01% thiomersal,50% glycerol,pH7.3.
偶联物	Unconjugated
阳性对照	HepG2,Mouse brain,Rat brain
细胞定位	plasma membrane
纯化	Affinity purification

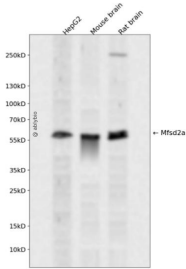
抗原信息

抗原信息	Recombinant fusion protein containing a sequence corresponding to amino acids 170-245 of mouse Mfsd 2a (NP_083938.2).
序列	SALTMFISTEQSERDSATAYRMTVEVLGTVIGTAIQGQIVGQAKAPCLQDQNGSVVSEVANRTQSTASLKDTQNA

靶点信息

研究背景	Sodium-dependent lysophosphatidylcholine (LPC symporter, which plays an essential role for blood-brain barrier formation and function. Specifically expressed in endothelium of the blood-brain barrier of micro-vessels and transports LPC into the brain. Transport of LPC is essential because it constitutes the major mechanism by which docosahexaenoic acid (DHA, an omega-3 fatty acid that is essential for normal brain growth and cognitive function, enters the brain. Transports LPC carrying long-chain fatty acids such LPC oleate and LPC palmitate with a minimum acyl chain length of 14 carbons. Does not transport docosahexaenoic acid in unesterified fatty acid. Specifically required for blood-brain barrier formation and function, probably by mediating lipid transport. Not required for central nervous system vascular morphogenesis. Acts as a transporter for tunicamycin, an inhibitor of asparagine-linked glycosylation.
基因ID	76574
基因名	
Swiss	Q9DA75
别名	NLS1;Mfsd2;1700018O18Rik;Mfsd2a

产品验证



Western blot analysis of Mfsd2a expressed in HepG2, Mouse brain, Rat brain using Mfsd2a Rabbit pAb at 1:1000. Secondary antibody: HRP Goat Anti-Rabbit IgG (H+L) at 1:5000. Lysates/proteins: 30ug per lane. Blocking buffer: 5% non-fat dry milk in TBST. Detection: ECL Enhanced Kit. Exposure time: 120s.

实验步骤

访问官网浏览详情: www.ablybio.cn