

SAT1 Rabbit pAb

货号: **AYP13689**

产品信息

反应	Human
宿主	Rabbit
克隆性	Polyclonal
预测反应	WB: Homo sapiens
应用	WB
推荐浓度	WB: 1:500 - 1:2000
理论分子量	20kDa
实测分子量	20kDa
形式	Liquid
保存条件	Store at -20°C. Avoid freeze / thaw cycles. Buffer: PBS with 0.05% proclin300,50% glycerol,pH7.3.
偶联物	Unconjugated
阳性对照	THP-1
细胞定位	Cytoplasm
纯化	Affinity purification

抗原信息

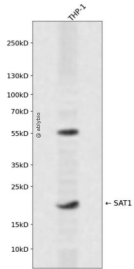
抗原信息	Recombinant fusion protein containing a sequence corresponding to amino acids 1-71 of human SAT1 (NP_002961.1).
序列	MAKFVIRPATAADCSDILRLIKELAKYEMEEQVILTEKDILLEDGFGEHPFYHCLVAEVPKEHWTPGHSI

靶点信息

研究背景	The protein encoded by this gene belongs to the acetyltransferase family, and is a rate-limiting enzyme in the catabolic pathway of polyamine metabolism. It catalyzes the acetylation of spermidine and spermine, and is involved in the regulation of the intracellular concentration of polyamines and their transport out of cells. Defects in this gene are associated with keratosis follicularis spinulosa decalvans (KFSD). Alternatively spliced transcripts have been found for this gene.
基因ID	6303

基因名	SAT1
Swiss	P21673
别名	DC21;KFSD;KFSDX;SAT;SSAT;SSAT-1;SAT1

产品验证



Western blot analysis of SAT1 expressed in THP-1 using SAT1 Rabbit pAb at 1:1000. Secondary antibody: HRP Goat Anti-Rabbit IgG (H+L) at 1:5000. Lysates/proteins: 30ug per lane. Blocking buffer: 5% non-fat dry milk in TBST. Detection: ECL Enhanced Kit. Exposure time: 120s.

实验步骤

访问官网浏览详情: www.ablybio.cn