

DBH Rabbit pAb

货号: **AYP13673**

产品信息

反应	Human,Mouse,Rat
宿主	Rabbit
克隆性	Polyclonal
预测反应	WB: Mus musculus
应用	WB
推荐浓度	WB: 1:500 - 1:1000
理论分子量	69kDa
实测分子量	79kDa
形式	Liquid
保存条件	Store at -20°C. Avoid freeze / thaw cycles. Buffer: PBS with 0.02% sodium azide,50% glycerol,pH7.3.
偶联物	Unconjugated
阳性对照	Mouse brain
细胞定位	Cytoplasmic vesicle,Single-pass type II membrane protein,chromaffin granule lumen,chromaffin granule membrane,secretory vesicle,secretory vesicle lumen,secretory vesicle membrane
纯化	Affinity purification

抗原信息

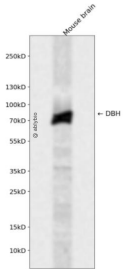
抗原信息	A synthetic peptide corresponding to a sequence within amino acids 150-250 of human DBH (NP_000778.3).
序列	PFGTCDPKDYLIEDGTVHLVYGILEEPFRSLEAINSGQLQMGLQRVQLLKPNPEPELPSDACTMEVQAPNIQIPSQETTYWCYIKELPKGFSRHHIIKYE

靶点信息

研究背景	The protein encoded by this gene is an oxidoreductase belonging to the copper type II, ascorbate-dependent monooxygenase family. It is present in the synaptic vesicles of postganglionic sympathetic neurons and converts dopamine to norepinephrine. It exists in both soluble and membrane-bound forms, depending on the absence or presence, respectively, of a signal peptide.
基因ID	1621

基因名	DBH
Swiss	P09172
别名	DBH;DBM

产品验证



Western blot analysis of DBH expressed in Mouse brain using DBH Rabbit pAb at 1:1000. Secondary antibody: HRP Goat Anti-Rabbit IgG (H+L) at 1:5000. Lysates/proteins: 30ug per lane. Blocking buffer: 5% non-fat dry milk in TBST. Detection: ECL Enhanced Kit. Exposure time: 120s.

实验步骤

访问官网浏览详情: www.ablybio.cn