

# GPT Rabbit pAb

货号: **AYP13662**

## 产品信息

反应	Human,Mouse,Rat
宿主	Rabbit
克隆性	Polyclonal
预测反应	<b>WB:</b> Homo sapiens <b>IF:</b> Homo sapiens
应用	<a href="#">WB</a>
推荐浓度	<b>WB:</b> 1:200 - 1:1000
理论分子量	54kDa
实测分子量	55kDa
形式	Liquid
保存条件	Store at -20°C. Avoid freeze / thaw cycles. Buffer: PBS with 0.02% sodium azide,50% glycerol,pH7.3.
偶联物	Unconjugated
阳性对照	Mouse liver,Mouse lung,Mouse intestine,Rat liver,Rat heart
细胞定位	Cytoplasm
纯化	Affinity purification

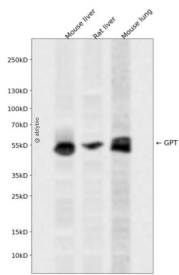
## 抗原信息

抗原信息	Recombinant fusion protein containing a sequence corresponding to amino acids 1-190 of human GPT (N P_005300.1).
序列	MASSTGDRSQAVRHGLRAKVLTLDGMNPRVRRVEYAVRGPIVQRALELEQELRQGVKKPFTEVIRANIGDAQAMGQRPIT FLRQVLALCVNPDLLSSPNFPDDAKKRAERILQACGGHSLGAYSVSSGIQLIREDEVARYIERRDGGIPADPNNVFLSTGASD AIVTVLKLLVAGEGHTRTRTGVLIPQYP

## 靶点信息

研究背景	This gene encodes cytosolic alanine aminotransaminase 1 (ALT1); also known as glutamate-pyruvate transaminase 1. This enzyme catalyzes the reversible transamination between alanine and 2-oxoglutarate to generate pyruvate and glutamate and, therefore, plays a key role in the intermediary metabolism of glucose and amino acids. Serum activity levels of this enzyme are routinely used as a biomarker of liver injury caused by drug toxicity, infection, alcohol, and steatosis. A related gene on chromosome 16 encodes a putative mitochondrial alanine aminotransaminase.
基因ID	2875
基因名	GPT
Swiss	P24298
别名	GPT;AAT1;ALT1;GPT1

## 产品验证



Western blot analysis of GPT expressed in Mouse liver,Rat liver,Mouse lung using GPT Rabbit pAb at 1:1 000. Secondary antibody: HRP Goat Anti-Rabbit IgG (H+L) at 1:5000. Lysates/proteins: 30ug per lane. Blocking buffer: 5% non-fat dry milk in TBST. Detection: ECL Enhanced Kit. Exposure time: 120s.

## 实验步骤

访问官网浏览详情: [www.ablybio.cn](http://www.ablybio.cn)