

# CLEC5A Rabbit pAb

货号: **AYP13661**

## 产品信息

反应	Human,Mouse,Rat
宿主	Rabbit
克隆性	Polyclonal
预测反应	<b>WB:</b> Mus musculus
应用	<a href="#">WB</a>
推荐浓度	<b>WB:</b> 1:500 - 1:1000
理论分子量	21kDa
实测分子量	20kDa
形式	Liquid
保存条件	Store at -20°C. Avoid freeze / thaw cycles. Buffer: PBS with 0.02% sodium azide,50% glycerol,pH7.3.
偶联物	Unconjugated
阳性对照	LO2,B cells,Mouse spleen,Rat spleen
细胞定位	Cell membrane,Single-pass type II membrane protein
纯化	Affinity purification

## 抗原信息

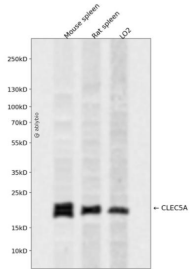
抗原信息	Recombinant fusion protein containing a sequence corresponding to amino acids 29-188 of human CLEC5A (NP_037384.1).
序列	QIFNKSNDGFTTTRS YGTVSQIFGSSSPSPNGFITTRS YGTVCPKDWEFYQARCFLLSTSESSWNESRDFCKGKGSTLAIVNTPEKLFQLDITDAEKYFIGLIYHREEKRWRWINNSVFNGNVTNQNFNCATIGLTKTFDAASCDISYRRICEKNAK

## 靶点信息

研究背景	This gene encodes a member of the C-type lectin/C-type lectin-like domain (CTL/CTLD) superfamily. Members of this family share a common protein fold and have diverse functions, such as cell adhesion, cell-cell signaling, glycoprotein turnover, and roles in inflammation and immune response. The encoded type II transmembrane protein interacts with dnax-activation protein 12 and may play a role in cell activation. Alternative splice variants have been described but their full-length sequence has not been determined.
基因ID	23601

基因名	CLEC5A
Swiss	Q9NY25
别名	CLEC5A;CLECSF5;MDL-1;MDL1

## 产品验证



Western blot analysis of CLEC5A expressed in Mouse spleen,Rat spleen,LO2 using CLEC5A Rabbit pAb at 1:1000. Secondary antibody: HRP Goat Anti-Rabbit IgG (H+L) at 1:5000. Lysates/proteins: 30ug per lane. Blocking buffer: 5% non-fat dry milk in TBST. Detection: ECL Enhanced Kit. Exposure time: 120s.

## 实验步骤

访问官网浏览详情: [www.ablybio.cn](http://www.ablybio.cn)