

OAT3/SLC22A8 Rabbit pAb

货号: **AYP13642**

产品信息

反应	Human
宿主	Rabbit
克隆性	Polyclonal
预测反应	WB: Mus musculus
应用	WB
推荐浓度	WB: 1:500 - 1:1000
理论分子量	11kDa/46kDa/49kDa/59kDa/60kDa
实测分子量	60kDa
形式	Liquid
保存条件	Store at -20°C. Avoid freeze / thaw cycles. Buffer: PBS with 0.02% sodium azide,50% glycerol,pH7.3.
偶联物	Unconjugated
阳性对照	293T,U-251MG
细胞定位	Basolateral cell membrane,Multi-pass membrane protein
纯化	Affinity purification

抗原信息

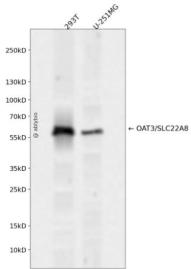
抗原信息	A synthetic peptide corresponding to a sequence within amino acids 400 to the C-terminus of human OAT 3/SLC22A8 (NP_004245.2).
序列	LTFVPLDLQTVRTLAVFGKGLSSSFCLFLYTSSELYPTVIRQTGMGVSNLWTRVGSMSVPLVKITGEVQPFIPNIIYGITAL LGGSAALFLPETLNQPLPETIEDLENWSLRAKKPKQEPEVEKASQRIPLQPHGPGLGSS

靶点信息

研究背景	This gene encodes a protein involved in the sodium-independent transport and excretion of organic anion s, some of which are potentially toxic. The encoded protein is an integral membrane protein and appears to be localized to the basolateral membrane of the kidney. Multiple alternatively spliced transcript variant s that encode different protein isoforms have been described for this gene.
基因ID	9376

基因名	SLC22A8
Swiss	Q8TCC7
别名	SLC22A8;OAT3

产品验证



Western blot analysis of OAT3/SLC22A8 expressed in 293T,U-251MG using OAT3/SLC22A8 Rabbit pAb at 1:1000. Secondary antibody: HRP Goat Anti-Rabbit IgG (H+L) at 1:5000. Lysates/proteins: 30ug per lane. Blocking buffer: 5% non-fat dry milk in TBST. Detection: ECL Enhanced Kit. Exposure time: 120s.

实验步骤

访问官网浏览详情: www.ablybio.cn