

SFTP1 Rabbit pAb

货号: **AYP13641**

产品信息

反应	Human,Mouse,Rat
宿主	Rabbit
克隆性	Polyclonal
预测反应	WB: Homo sapiens
应用	WB IHC
推荐浓度	WB: 1:500 - 1:1000 IHC: 1:50 - 1:200
理论分子量	26kDa/27kDa
实测分子量	30KDa
形式	Liquid
保存条件	Store at -20°C. Avoid freeze / thaw cycles. Buffer: PBS with 0.01% thiomersal,50% glycerol,pH7.3.
偶联物	Unconjugated
阳性对照	Mouse lung,Rat lung
细胞定位	Secreted,extracellular matrix,extracellular space,surface film
纯化	Affinity purification

抗原信息

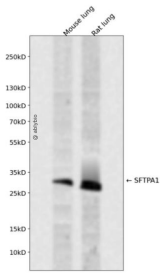
抗原信息	A synthetic peptide corresponding to a sequence within amino acids 149-248 of human SFTP1 (NP_005402.3).
序列	DAIQEACARAGGRIAVPRNPEENEAIASFVKKYNTYAYVGLTEGSPSGDFRYS DGTVPVNYTNWYRGEPAGRGKEQCVEMYTDGQWDRNCLYSRLTICEF

靶点信息

研究背景	This gene encodes a lung surfactant protein that is a member of a subfamily of C-type lectins called collectins. The encoded protein binds specific carbohydrate moieties found on lipids and on the surface of microorganisms. This protein plays an essential role in surfactant homeostasis and in the defense against respiratory pathogens. Mutations in this gene are associated with idiopathic pulmonary fibrosis. Alternate splicing results in multiple transcript variants.
------	--

基因ID	653509
基因名	SFTPA1
Swiss	Q8IWL2
别名	SFTPA1;COLEC4;PSAP;PSP-A;PSPA;SFTP1;SFTPA1B;SP-A;SP-A1;SPA;SPA1

产品验证



Western blot analysis of SFTPA1 expressed in Mouse lung,Rat lung using SFTPA1 Rabbit pAb at 1:1000. Secondary antibody: HRP Goat Anti-Rabbit IgG (H+L) at 1:5000. Lysates/proteins: 30ug per lane. Blocking buffer: 5% non-fat dry milk in TBST. Detection: ECL Enhanced Kit. Exposure time: 120s.

实验步骤

访问官网浏览详情: www.ablybio.cn