

ABCA6 Rabbit pAb

货号: **AYP13631**

产品信息

反应	Human,Mouse,Rat
宿主	Rabbit
克隆性	Polyclonal
预测反应	WB: Mus musculus
应用	WB IF/ICC
推荐浓度	WB: 1:100 - 1:500 IF/ICC: 1:50 - 1:200
理论分子量	44kDa/183kDa
实测分子量	185KDa
形式	Liquid
保存条件	Store at -20°C. Avoid freeze / thaw cycles. Buffer: PBS with 0.05% proclin300,50% glycerol,pH7.3.
偶联物	Unconjugated
阳性对照	Mouse liver,Rat liver
细胞定位	Membrane,Multi-pass membrane protein
纯化	Affinity purification

抗原信息

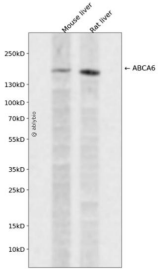
抗原信息	Recombinant fusion protein containing a sequence corresponding to amino acids 690-828 of human ABCA6 (NP_525023.2).
序列	RLKCAGSSMFLKRRWGLGYHLSLHRNEICNPEQITSFITHHIPDAKLKTKTENKEKLVYTLPLERTNTFPDLFSDLDKCSQGV TGYDISMSTLNEVFMKLEGQSTIEQDFEQVEMIRDSESLNEMELAHSSFSEMQTAVS

靶点信息

研究背景	The membrane-associated protein encoded by this gene is a member of the superfamily of ATP-binding cassette (ABC) transporters. ABC proteins transport various molecules across extra- and intracellular membranes. ABC genes are divided into seven distinct subfamilies (ABC1, MDR/TAP, MRP, ALD, OABP, GCN20, and White). This encoded protein is a member of the ABC1 subfamily. Members of the ABC1 subfamily comprise the only major ABC subfamily found exclusively in multicellular eukaryotes. This gene is clustered among 4 other ABC1 family members on 17q24 and may play a role in macrophage lipid homeostasis.
------	--

基因ID	76184
基因名	
Swiss	
别名	ABCA6;EST155051;Abca6

产品验证



Western blot analysis of ABCA6 expressed in Mouse liver,Rat liver using ABCA6 Rabbit pAb at 1:1000. Secondary antibody: HRP Goat Anti-Rabbit IgG (H+L) at 1:5000. Lysates/proteins: 30ug per lane. Blocking buffer: 5% non-fat dry milk in TBST. Detection: ECL Enhanced Kit. Exposure time: 120s.

实验步骤

访问官网浏览详情: www.ablybio.cn