

MAP1B Rabbit pAb

货号: **AYP13623**

产品信息

反应	Human,Mouse,Rat
宿主	Rabbit
克隆性	Polyclonal
预测反应	WB: Mus musculus
应用	WB IHC IF/ICC
推荐浓度	WB: 1:200 - 1:2000 IHC: 1:50 - 1:200 IF/ICC: 1:50 - 1:200
理论分子量	270kDa
实测分子量	350kDa
形式	Liquid
保存条件	Store at -20°C. Avoid freeze / thaw cycles. Buffer: PBS with 0.02% sodium azide,50% glycerol,pH7.3.
偶联物	Unconjugated
阳性对照	DU145,293T,HT-1080,Rat testis
细胞定位	Cell junction,Cell projection,Cytoplasm,cytoskeleton,dendritic spine,synapse
纯化	Affinity purification

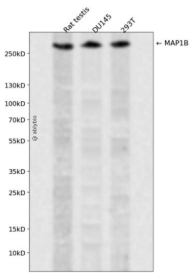
抗原信息

抗原信息	Recombinant fusion protein containing a sequence corresponding to amino acids 1820-2100 of human M AP1B (NP_005900.2).
序列	PPIDAASAEPYGFRASVLFDTMQHHLALNRDLSTPGLKDSGGKTPGDFSYAYQKPEETTRSPDEEDYDYESYEKTRTS DVGGYYYEKIERTTKSPSDSGYSYETIGTKTKPEDGDYSYEIIEKTRTPEEGGYSYDISEKTTSPPEVSGYSYEKTERSRL LDDISNGYDDSEDGGHTLGDPSYSYETTEKITSFPESEGYSETSTKTRTPDTSTYCYETAEKITRTPQASTYSYETSDLCY TAEKSPSEARQDVDLCLVSSCEYKHPKTELSPS

靶点信息

研究背景	This gene encodes a protein that belongs to the microtubule-associated protein family. The proteins of this family are thought to be involved in microtubule assembly, which is an essential step in neurogenesis. The product of this gene is a precursor polypeptide that presumably undergoes proteolytic processing to generate the final MAP1B heavy chain and LC1 light chain. Gene knockout studies of the mouse microtubule-associated protein 1B gene suggested an important role in development and function of the nervous system.
基因ID	4131
基因名	MAP1B
Swiss	P46821
别名	MAP1B;FUTSCH;MAP5;PPP1R102

产品验证



Western blot analysis of MAP1B expressed in Rat testis, DU145, 293T using MAP1B Rabbit pAb at 1:1000. Secondary antibody: HRP Goat Anti-Rabbit IgG (H+L) at 1:5000. Lysates/proteins: 30ug per lane. Blocking buffer: 5% non-fat dry milk in TBST. Detection: ECL Enhanced Kit. Exposure time: 120s.

实验步骤

访问官网浏览详情: www.ablybio.cn