

MT-CO3 Rabbit pAb

货号: **AYP13621**

产品信息

反应	Human,Mouse,Rat
宿主	Rabbit
克隆性	Polyclonal
预测反应	WB: Homo sapiens
应用	WB IHC IF/ICC
推荐浓度	WB: 1:500 - 1:2000 IHC: 1:50 - 1:200 IF/ICC: 1:50 - 1:200
理论分子量	30kDa
实测分子量	30kDa
形式	Liquid
保存条件	Store at -20°C. Avoid freeze / thaw cycles. Buffer: PBS with 0.01% thiomersal,50% glycerol,pH7.3.
偶联物	Unconjugated
阳性对照	
细胞定位	mitochondrial inner membrane,mitochondrial respiratory chain complex IV,mitochondrion
纯化	Affinity purification

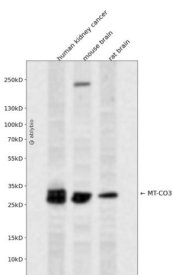
抗原信息

抗原信息	A synthetic peptide corresponding to a sequence within amino acids 50-150 of human MT-CO3 (YP_003024032.1).
序列	NLTMYQWWRDVTRESTYQGHTPPVQKGLRYGMILFITSEVFFFAGFFWAFYHSSLAPTPQLGGHWPPTGITPLNPLEV PLLNTSVLLASGVSITWAHHS

靶点信息

研究背景	Component of the cytochrome c oxidase, the last enzyme in the mitochondrial electron transport chain which drives oxidative phosphorylation. The respiratory chain contains 3 multisubunit complexes succinate dehydrogenase (complex II, CII, ubiquinol-cytochrome c oxidoreductase (cytochrome b-c1 complex, complex III, CIII) and cytochrome c oxidase (complex IV, CIV, that cooperate to transfer electrons derived from NADH and succinate to molecular oxygen, creating an electrochemical gradient over the inner membrane that drives transmembrane transport and the ATP synthase. Cytochrome c oxidase is the component of the respiratory chain that catalyzes the reduction of oxygen to water. Electrons originating from reduced cytochrome c in the intermembrane space (IMS) are transferred via the dinuclear copper A center (CU(A) of subunit 2 and heme A of subunit 1 to the active site in subunit 1, a binuclear center (BNC formed by heme A3 and copper B (CU(B). The BNC reduces molecular oxygen to 2 water molecules using 4 electrons from cytochrome c in the IMS and 4 protons from the mitochondrial matrix.
基因ID	4514
基因名	MT-CO3
Swiss	P00414
别名	COIII;MTCO3;COX3;MT-CO3

产品验证



Western blot analysis of MT-CO3 expressed in human kidney cancer, mouse brain, rat brain using MT-CO3 Rabbit pAb at 1:1000. Secondary antibody: HRP Goat Anti-Rabbit IgG (H+L) at 1:5000. Lysates/proteins: 30ug per lane. Blocking buffer: 5% non-fat dry milk in TBST. Detection: ECL Enhanced Kit. Exposure time: 120s.

实验步骤

访问官网浏览详情: www.ablybio.cn