

# SRSF2 Rabbit pAb

货号: **AYP13615**

## 产品信息

反应	Human,Mouse,Rat
宿主	Rabbit
克隆性	Polyclonal
预测反应	<b>WB:</b> Mus musculus
应用	<a href="#">WB</a> <a href="#">IHC</a>
推荐浓度	<b>WB:</b> 1:500 - 1:2000 <b>IHC:</b> 1:50 - 1:200
理论分子量	24kDa/25kDa
实测分子量	28kDa/32kDa
形式	Liquid
保存条件	Store at -20°C. Avoid freeze / thaw cycles. Buffer: PBS with 0.01% thiomersal,50% glycerol,pH7.3.
偶联物	Unconjugated
阳性对照	Mouse lung,Raji,THP-1
细胞定位	Nucleus,Nucleus speckle,nucleoplasm
纯化	Affinity purification

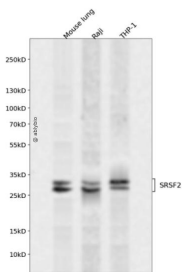
## 抗原信息

抗原信息	A synthetic peptide corresponding to a sequence within amino acids 1-100 of human SRSF2 (NP_003007.2).
序列	MSYGRPPPDVEGMTSLKVDNLTYRTSPDTRLRRVFEKYGRVGDVYIPRDRYTKESRGFAFVRFHDKRDAEDAMDAMDGA VLDGRELRVQMARYGRPPDSHH

## 靶点信息

研究背景	The protein encoded by this gene is a member of the serine/arginine (SR)-rich family of pre-mRNA splicing factors, which constitute part of the spliceosome. Each of these factors contains an RNA recognition motif (RRM) for binding RNA and an RS domain for binding other proteins. The RS domain is rich in serine and arginine residues and facilitates interaction between different SR splicing factors. In addition to being critical for mRNA splicing, the SR proteins have also been shown to be involved in mRNA export from the nucleus and in translation. Two transcript variants encoding the same protein and one non-coding transcript variant have been found for this gene. In addition, a pseudogene of this gene has been found on chromosome 11.
基因ID	6427
基因名	SRSF2
Swiss	Q01130
别名	SRSF2;PR264;SC-35;SC35;SFRS2;SFRS2A;SRp30b

## 产品验证



Western blot analysis of SRSF2 expressed in Mouse lung, Raji, THP-1 using SRSF2 Rabbit pAb at 1:1000. Secondary antibody: HRP Goat Anti-Rabbit IgG (H+L) at 1:5000. Lysates/proteins: 30ug per lane. Blocking buffer: 5% non-fat dry milk in TBST. Detection: ECL Enhanced Kit. Exposure time: 120s.

## 实验步骤

访问官网浏览详情: [www.ablybio.cn](http://www.ablybio.cn)