

# CLTA Rabbit pAb

货号: **AYP13610**

## 产品信息

反应	Human,Mouse,Rat
宿主	Rabbit
克隆性	Polyclonal
预测反应	<b>WB:</b> Cynoglossus semilaevis
应用	<a href="#">WB</a>
推荐浓度	<b>WB:</b> 1:200 - 1:2000
理论分子量	17kDa/23kDa/24kDa/25kDa/27kDa
实测分子量	33kDa
形式	Liquid
保存条件	Store at -20°C. Avoid freeze / thaw cycles. Buffer: PBS with 0.02% sodium azide,50% glycerol,pH7.3.
偶联物	Unconjugated
阳性对照	BT-474,NCI-H460,HeLa,A-549
细胞定位	Cytoplasmic side,Cytoplasmic vesicle membrane,Membrane,Peripheral membrane protein,coated pit
纯化	Affinity purification

## 抗原信息

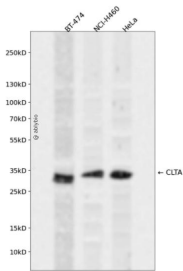
抗原信息	Recombinant fusion protein containing a sequence corresponding to amino acids 1-218 of human CLTA ( NP_001824.1).
序列	MAELDPFGAPAGAPGGPALGNGVAGAGEEDPAAFLAQESEIAGIENDEAFAILDGGAPGPQPHGEPGGPDAVDGV MNGEYYQESNGPTDSYAAISQVDRQLQSEPEISIRKWREEQMERLEALDANSRKQEAEWKEKAIKELEEWYARQDEQLQKT KANNRAAEEAFVNDIDESSPGTEWERVARLCDFNPKSSKQAKDVSRMRSVLISLQAPLVH

## 靶点信息

研究背景	Clathrin is a large, soluble protein composed of heavy and light chains. It functions as the main structural component of the lattice-type cytoplasmic face of coated pits and vesicles which entrap specific macromolecules during receptor-mediated endocytosis. This gene encodes one of two clathrin light chain proteins which are believed to function as regulatory elements. Alternative splicing results in multiple transcript variants. Related pseudogenes have been identified on chromosomes 8 and 12.
------	--

基因ID	1211
基因名	CLTA
Swiss	P09496
别名	CLTA;LCA

## 产品验证



Western blot analysis of CLTA expressed in BT-474, NCI-H460, HeLa using CLTA Rabbit pAb at 1:1000. Secondary antibody: HRP Goat Anti-Rabbit IgG (H+L) at 1:5000. Lysates/proteins: 30ug per lane. Blocking buffer: 5% non-fat dry milk in TBST. Detection: ECL Enhanced Kit. Exposure time: 120s.

## 实验步骤

访问官网浏览详情: [www.ablybio.cn](http://www.ablybio.cn)