

COL6A2 Rabbit pAb

货号: **AYP13609**

产品信息

反应	Human,Mouse
宿主	Rabbit
克隆性	Polyclonal
预测反应	WB: Oryctolagus cuniculus
应用	WB
推荐浓度	WB: 1:200 - 1:2000
理论分子量	87kDa/97kDa/108kDa
实测分子量	108kDa
形式	Liquid
保存条件	Store at -20°C. Avoid freeze / thaw cycles. Buffer: PBS with 0.02% sodium azide,50% glycerol,pH7.3.
偶联物	Unconjugated
阳性对照	HeLa,HT-1080,SKOV3,LO2,THP-1,Mouse lung
细胞定位	Membrane,Peripheral membrane protein,Secreted,extracellular matrix,extracellular space
纯化	Affinity purification

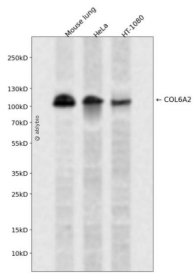
抗原信息

抗原信息	Recombinant fusion protein containing a sequence corresponding to amino acids 720-1019 of human COL6A2 (NP_001840.3).
序列	RQKTRVFAVVITDGRHDPDRDDDLNLRALCDRDVTVTAIIGIDMFHEKHESENLYSIACDKPQQVRNMTLFSDLVAEKFID DMEDVLCPPDQIVCPDLPCQTELSVAQCTQRPVDIVFLLDGSERLGEQNFHKARRFVEQVARRLLARRDDDPLNARVAL LQFGGPGEQQVAFPLSHNLTAIHEALETQYLNFSFHVAGVWHAINAIVRSRGGARRHAELSFVFLTDGVTGNDLHES AHSMRKQNVVPTVLALGSDVDMDLTTLTSLGDRAAVFHEKDYDSLQPGFFDRFIRWIC

靶点信息

研究背景	This gene encodes one of the three alpha chains of type VI collagen, a beaded filament collagen found in most connective tissues. The product of this gene contains several domains similar to von Willebrand Factor type A domains. These domains have been shown to bind extracellular matrix proteins, an interaction that explains the importance of this collagen in organizing matrix components. Mutations in this gene are associated with Bethlem myopathy and Ullrich scleroatonic muscular dystrophy. Three transcript variants have been identified for this gene.
基因ID	1292
基因名	COL6A2
Swiss	P12110
别名	COL6A2;BTHLM1;PP3610;UCMD1

产品验证



Western blot analysis of COL6A2 expressed in Mouse lung, HeLa, HT-1080 using COL6A2 Rabbit pAb at 1:1000. Secondary antibody: HRP Goat Anti-Rabbit IgG (H+L) at 1:5000. Lysates/proteins: 30ug per lane. Blocking buffer: 5% non-fat dry milk in TBST. Detection: ECL Enhanced Kit. Exposure time: 120s.

实验步骤

访问官网浏览详情: www.ablybio.cn