

# CIB1 Rabbit pAb

货号: **AYP13587**

## 产品信息

反应	Human,Mouse,Rat
宿主	Rabbit
克隆性	Polyclonal
预测反应	<b>WB:</b> Mus musculus <b>IHC:</b> Mus musculus
应用	<a href="#">WB</a>
推荐浓度	<b>WB:</b> 1:500 - 1:2000
理论分子量	21kDa/26kDa
实测分子量	22kDa
形式	Liquid
保存条件	Store at -20°C. Avoid freeze / thaw cycles. Buffer: PBS with 0.02% sodium azide,50% glycerol,pH7.3.
偶联物	Unconjugated
阳性对照	293T,HepG2,HeLa,DU145,A-549,HT-29,Mouse kidney,Mouse liver
细胞定位	Apical cell membrane,Cell membrane,Cell projection,Cytoplasm,Golgi apparatus,Lipid-anchor,Membrane,Nucleus,centrosome,cytoskeleton,filopodium tip,growth cone,lamellipodium,microtubule organizing center,perinuclear region,ruffle membrane,sarcolemma,trans-Golgi network
纯化	Affinity purification

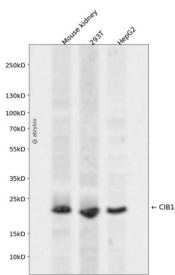
## 抗原信息

抗原信息	Recombinant fusion protein containing a sequence corresponding to amino acids 1-191 of human CIB1 (NP_006375.2).
序列	MGGSGSRLSKELLAEQDLTFLTKQEILLAHRRFCCELLPQEQRSVESLRAQVPFEQILSLPELKANPFKERICRVFSTSPAK DSLSEDFLDLLSVFSDTATPDIKSHYAFRIFDFDDDDGTLNREDLSRLVNCLTGEGEDTRLSASEMKQLIDNILEESDIDRD GTINLSEFQHVISRSPDFASSFKIVL

## 靶点信息

研究背景	This gene encodes a member of the EF-hand domain-containing calcium-binding superfamily. The encoded protein interacts with many other proteins, including the platelet integrin alpha-IIb-beta-3, DNA-dependent protein kinase, presenilin-2, focal adhesion kinase, p21 activated kinase, and protein kinase D. The encoded protein may be involved in cell survival and proliferation, and is associated with several disease states including cancer and Alzheimer's disease. Alternative splicing results in multiple transcript variants.
基因ID	10519
基因名	CIB1
Swiss	Q99828
别名	CIB1;CIB;CIBP;KIP1;PRKDCIP;SIP2-28

## 产品验证



Western blot analysis of CIB1 expressed in Mouse kidney,293T,HepG2 using CIB1 Rabbit pAb at 1:1000. Secondary antibody: HRP Goat Anti-Rabbit IgG (H+L) at 1:5000. Lysates/proteins: 30ug per lane. Blocking buffer: 5% non-fat dry milk in TBST. Detection: ECL Enhanced Kit. Exposure time: 120s.

## 实验步骤

访问官网浏览详情: [www.ablybio.cn](http://www.ablybio.cn)