

RAB10 Rabbit pAb

货号: **AYP13585**

产品信息

反应	Human
宿主	Rabbit
克隆性	Polyclonal
预测反应	WB: Homo sapiens
应用	WB
推荐浓度	WB: 1:500 - 1:2000
理论分子量	22kDa
实测分子量	23KDa
形式	Liquid
保存条件	Store at -20°C. Avoid freeze / thaw cycles. Buffer: PBS with 0.02% sodium azide,50% glycerol,pH7.3.
偶联物	Unconjugated
阳性对照	NIH/3T3
细胞定位	Cell projection,Cytoplasmic side,Cytoplasmic vesicle,Cytoplasmic vesicle membrane,Endoplasmic reticulum membrane,Endosome membrane,Golgi apparatus,Lipid-anchor,Recycling endosome membrane,cilium, phagosome membrane,trans-Golgi network membrane
纯化	Affinity purification

抗原信息

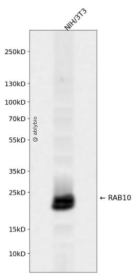
抗原信息	Recombinant fusion protein containing a sequence corresponding to amino acids 1-190 of human RAB10 (NP_057215.3).
序列	MAKPTYDLLFKLLIGDSGVGKTCVLFRRFSDDAFNTTFISTIGIDFKIKTVELQGKKIKLQIWDTAGQERFHTITTSYYRGAM GIMLVYDITNGKSFENISKWLRNIDEHANEDVERMLLGNKCDMDDKRVVPGKGGEQIAREHGIRFFETSAKANINIEKAFLT LAEDILRKTPVKEPNSENVDISSGG

靶点信息

研究背景	RAB10 belongs to the RAS (see HRAS; MIM 190020) superfamily of small GTPases. RAB proteins localize to exocytic and endocytic compartments and regulate intracellular vesicle trafficking (Bao et al., 1998 [PubMed 9918381]).[supplied by OMIM, Mar 2009]
------	--

基因ID	10890
基因名	RAB10
Swiss	P61026
别名	RAB10

产品验证



Western blot analysis of RAB10 expressed in NIH/3T3 using RAB10 Rabbit pAb at 1:1000. Secondary antibody: HRP Goat Anti-Rabbit IgG (H+L) at 1:5000. Lysates/proteins: 30ug per lane. Blocking buffer: 5% non-fat dry milk in TBST. Detection: ECL Enhanced Kit. Exposure time: 120s.

实验步骤

访问官网浏览详情: www.ablybio.cn