

CYC1 Rabbit pAb

货号: **AYP13584**

产品信息

反应	Human,Mouse,Rat
宿主	Rabbit
克隆性	Polyclonal
预测反应	WB: Rana sylvatica
应用	WB IHC
推荐浓度	WB: 1:500 - 1:2000 IHC: 1:100 - 1:200
理论分子量	35kDa
实测分子量	35kDa
形式	Liquid
保存条件	Store at -20°C. Avoid freeze / thaw cycles. Buffer: PBS with 0.02% sodium azide,50% glycerol,pH7.3.
偶联物	Unconjugated
阳性对照	A-549,A375,LO2,22Rv1,Mouse brain,Mouse kidney,Mouse liver,Mouse heart,Rat liver
细胞定位	Intermembrane side,Mitochondrion inner membrane,Single-pass membrane protein
纯化	Affinity purification

抗原信息

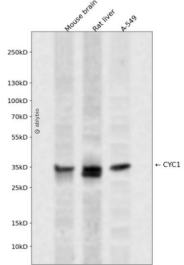
抗原信息	Recombinant fusion protein containing a sequence corresponding to amino acids 85-291 of human CYC1 (NP_001907.2).
序列	SDLELHPPSPWWSHRGLLSSLDHTSIRRGFQVYKQVCASCHSMDFVAYRHLVGVCYTEDEAKELAAEVEVQDGNEDGE MFMRPGKLFDYFPKYPNSEAARAANNALPPDLSYIVRARHGGEDYVFSLLTGYCEPPTGVSLREGLYFNPFPGQAIAM APPIYTDVLEFDDGTPATMSQIAKDVCTFLRWASEPEHDHRKRMGLK

靶点信息

研究背景	This gene encodes a subunit of the cytochrome bc1 complex, which plays an important role in the mitochondrial respiratory chain by transferring electrons from the Rieske iron-sulfur protein to cytochrome c. Mutations in this gene may cause mitochondrial complex III deficiency, nuclear type 6.
基因ID	1537

基因名	CYC1
Swiss	P08574
别名	CYC1;MC3DN6;UQCR4

产品验证



Western blot analysis of CYC1 expressed in Mouse brain,Rat liver,A-549 using CYC1 Rabbit pAb at 1:1000. Secondary antibody: HRP Goat Anti-Rabbit IgG (H+L) at 1:5000. Lysates/proteins: 30ug per lane. Blocking buffer: 5% non-fat dry milk in TBST. Detection: ECL Enhanced Kit. Exposure time: 120s.

实验步骤

访问官网浏览详情: www.ablybio.cn