

SLC38A3 Rabbit pAb

货号: **AYP13583**

产品信息

反应	Human,Mouse,Rat
宿主	Rabbit
克隆性	Polyclonal
预测反应	WB: Gallus gallus
应用	WB
推荐浓度	WB: 1:500 - 1:2000
理论分子量	55kDa
实测分子量	60kDa
形式	Liquid
保存条件	Store at -20°C. Avoid freeze / thaw cycles. Buffer: PBS with 0.01% thiomersal,50% glycerol,pH7.3.
偶联物	Unconjugated
阳性对照	HeLa,Raji,Mouse brain
细胞定位	Cell membrane,Multi-pass membrane protein
纯化	Affinity purification

抗原信息

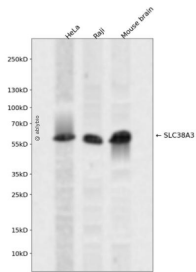
抗原信息	Recombinant fusion protein containing a sequence corresponding to amino acids 1-65 of human SLC38A3 (NP_006832.1).
序列	MEAPLQTEMVELVPNGKHSEGLLPVITPMAGNQRVEDPARSCMEGKSFLQKSPSKEPHFTDFEGK

靶点信息

研究背景	Sodium-dependent amino acid/proton antiporter. Mediates electrogenic cotransport of glutamine and sodium ions in exchange for protons. Also recognizes histidine, asparagine and alanine. May mediate amino acid transport in either direction under physiological conditions. May play a role in nitrogen metabolism and synaptic transmission.
基因ID	10991

基因名	SLC38A3
Swiss	Q99624
别名	SLC38A3;G17;NAT1;SN1;SNAT3

产品验证



Western blot analysis of SLC38A3 expressed in HeLa, Raji, Mouse brain using SLC38A3 Rabbit pAb at 1:1000. Secondary antibody: HRP Goat Anti-Rabbit IgG (H+L) at 1:5000. Lysates/proteins: 30ug per lane. Blocking buffer: 5% non-fat dry milk in TBST. Detection: ECL Enhanced Kit. Exposure time: 120s.

实验步骤

访问官网浏览详情: www.ablybio.cn