

ERP44 Rabbit pAb

货号: **AYP13581**

产品信息

反应	Human,Mouse,Rat
宿主	Rabbit
克隆性	Polyclonal
预测反应	WB: Homo sapiens
应用	WB
推荐浓度	WB: 1:500 - 1:2000
理论分子量	46kDa
实测分子量	40-48kDa
形式	Liquid
保存条件	Store at -20°C. Avoid freeze / thaw cycles. Buffer: PBS with 0.01% thiomersal,50% glycerol,pH7.3.
偶联物	Unconjugated
阳性对照	HeLa,U-87MG,HepG2,Mouse kidney,Rat Pancreas
细胞定位	Endoplasmic reticulum lumen
纯化	Affinity purification

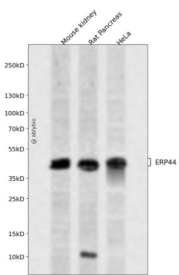
抗原信息

抗原信息	Recombinant fusion protein containing a sequence corresponding to amino acids 57-406 of human ERP44 (NP_055866.1).
序列	WCRFSQMLHPIFEEASDVIKEEFPNENQVVFARVDCDQHSDIAQRYRISKYPTLKLFRNGMMMREYRGQRSVKALADYI RQQKSDPIQEIRDLAIEITTLDRSKRNIIGYFEQKSDSDNYRVFERVANILHDDCAFLSAFGDVSKPERYSGDNIIYKPPGHSAP DMVYLGAMTNFDVTYNWIQDKCVPLVREITFENGEELTEEGLPFLILFHMKEDTESLEIFQNEVARQLISEKGTINFLHADCD KFRHPLLHIQKTPADCPVIAIDSRHMYVFGDFKDVLPGLKQVFDLHSGKLHREFHHGPDPTDTAPGEQAQDVASSPP ESSFQKLAPSEYRYTLRRDRDEL

靶点信息

研究背景	This gene encodes a member of the protein disulfide isomerase (PDI) family of endoplasmic reticulum (ER) proteins. It has an inferred N-terminal signal peptide, a catalytically active thioredoxin (TRX) domain, two TRX-like domains and a C-terminal ER-retention sequence. This protein functions as a pH-regulated chaperone of the secretory pathway and likely plays a role in protein quality control at the endoplasmic reticulum - Golgi interface.
基因ID	23071
基因名	ERP44
Swiss	Q9BS26
别名	ERP44;PDIA10;TXNDC4

产品验证



Western blot analysis of ERP44 expressed in Mouse kidney, Rat Pancreas, HeLa using ERP44 Rabbit pAb at 1:1000. Secondary antibody: HRP Goat Anti-Rabbit IgG (H+L) at 1:5000. Lysates/proteins: 30ug per lane. Blocking buffer: 5% non-fat dry milk in TBST. Detection: ECL Enhanced Kit. Exposure time: 120s.

实验步骤

访问官网浏览详情: www.ablybio.cn