

COTL1 Rabbit pAb

货号: **AYP13579**

产品信息

反应	Human,Mouse,Rat
宿主	Rabbit
克隆性	Polyclonal
预测反应	WB: human
应用	WB IHC
推荐浓度	WB: 1:500 - 1:2000 IHC: 1:50 - 1:200
理论分子量	15kDa
实测分子量	14kDa
形式	Liquid
保存条件	Store at -20°C. Avoid freeze / thaw cycles. Buffer: PBS with 0.02% sodium azide,50% glycerol,pH7.3.
偶联物	Unconjugated
阳性对照	Jurkat,293T,U-251MG,HeLa,Mouse lung,Mouse kidney,Mouse spleen
细胞定位	Cytoplasm,Nucleus membrane,Peripheral membrane protein,cytoskeleton
纯化	Affinity purification

抗原信息

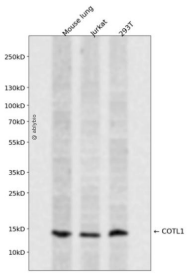
抗原信息	Recombinant fusion protein containing a sequence corresponding to amino acids 1-142 of human COTL1 (NP_066972.1).
序列	MATKIDKEACRAAYNLVRDDGSAVIWWTFKYDGGSTIVPGEQGAEQHFIIQQCTDDVRLFAFVRFITGDAMSKRSKFALITWIGENVSGLQRAKTGTDKTLVKEVVQNFQFAKEFVISDRKELEEDFIKSELKKAGGANYDAQTE

靶点信息

研究背景	This gene encodes one of the numerous actin-binding proteins which regulate the actin cytoskeleton. This protein binds F-actin, and also interacts with 5-lipoxygenase, which is the first committed enzyme in leukotriene biosynthesis. Although this gene has been reported to map to chromosome 17 in the Smith-Magenis syndrome region, the best alignments for this gene are to chromosome 16. The Smith-Magenis syndrome region is the site of two related pseudogenes.
------	---

基因ID	23406
基因名	COTL1
Swiss	Q14019
别名	COTL1;CLP

产品验证



Western blot analysis of COTL1 expressed in Mouse lung, Jurkat, 293T using COTL1 Rabbit pAb at 1:1000. Secondary antibody: HRP Goat Anti-Rabbit IgG (H+L) at 1:5000. Lysates/proteins: 30ug per lane. Blocking buffer: 5% non-fat dry milk in TBST. Detection: ECL Enhanced Kit. Exposure time: 120s.

实验步骤

访问官网浏览详情: www.ablybio.cn